

# COVID-19: summary for Okaloosa County

Data through Oct 2, 2020 verified as of Oct 3, 2020 at 08:25 AM

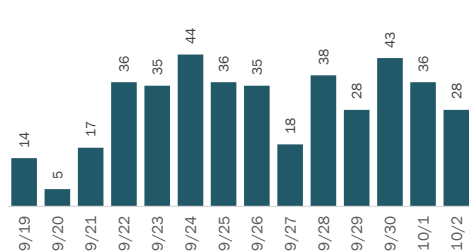
Data in this report are provisional and subject to change.

## Cases: people with positive PCR or antigen test result

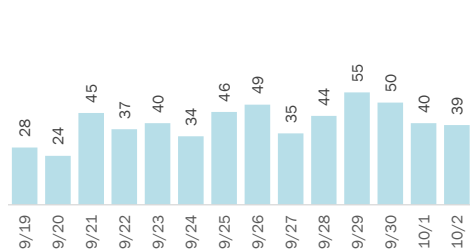
<b>Total cases</b>	<b>5,144</b>
Florida residents	5,103
Non-Florida residents	41
<b>Type of case</b>	
PCR positive	4,962
Antigen positive	141
<b>Gender for Florida residents</b>	
Men	2,323
Women	2,734
Unknown	46
<b>Age for Florida residents</b>	
Range	0 - 103
Median age	40

## Cases in Florida residents by date case confirmed

Cases



Median age



Race, ethnicity	Cases	Hospitalizations	Deaths
White	2,725   53%	199   66%	83   70%
Hispanic	353   7%	24   8%	2   2%
Non-Hispanic	2,238   44%	169   56%	67   56%
Unknown ethnicity	134   3%	6   2%	14   12%
Black	443   9%	47   16%	14   12%
Hispanic	10   0%	0   0%	0   0%
Non-Hispanic	407   8%	46   15%	13   11%
Unknown ethnicity	26   1%	1   0%	1   1%
Other	1,011   20%	40   13%	16   13%
Hispanic	244   5%	12   4%	7   6%
Non-Hispanic	694   14%	25   8%	7   6%
Unknown ethnicity	73   1%	3   1%	2   2%
Unknown race	924   18%	14   5%	6   5%
Hispanic	30   1%	3   1%	0   0%
Non-Hispanic	144   3%	2   1%	2   2%
Unknown ethnicity	750   15%	9   3%	4   3%
<b>Total</b>	<b>5,103</b>	<b>300</b>	<b>119</b>

## Outcomes for Florida residents

### Okaloosa

Hospitalizations	300	(6% of all cases)
Deaths	119	(2% of all cases)
New deaths	3	

### Statewide

Hospitalizations	44,623	(6% of all cases)
Deaths	14,628	(2% of all cases)
New deaths	122	

New deaths are those reported on Oct 2

## Cases in facility staff/residents

### Okaloosa

Long-term care	546	(11% of all cases)
Correctional	91	(2% of all cases)

### Statewide

Long-term care	47,381	(7% of all cases)
Correctional	23,142	(3% of all cases)

Age group	All cases	New cases (10/02)	Hospitalizations	Deaths
0-4 years	59   1%	0   0%	0   0%	0   0%
5-14 years	179   4%	2   7%	2   1%	0   0%
15-24 years	857   17%	2   7%	8   3%	0   0%
25-34 years	1,003   20%	7   25%	21   7%	4   3%
35-44 years	794   16%	6   21%	29   10%	1   1%
45-54 years	675   13%	2   7%	34   11%	6   5%
55-64 years	677   13%	3   11%	52   17%	13   11%
65-74 years	432   8%	6   21%	55   18%	14   12%
75-84 years	249   5%	0   0%	65   22%	36   30%
85+ years	171   3%	0   0%	34   11%	45   38%
Unknown	7   0%	0   0%	0   0%	0   0%
<b>Total</b>	<b>5,103</b>	<b>28</b>	<b>300</b>	<b>119</b>

**Hospitalization** counts include anyone who was hospitalized at some point during their illness. It does not reflect the number of people currently hospitalized.

**Other race** includes any person with a race of American Indian/Alaskan native, Asian, native Hawaiian/Pacific Islander, or other.

# COVID-19: summary for Okaloosa County

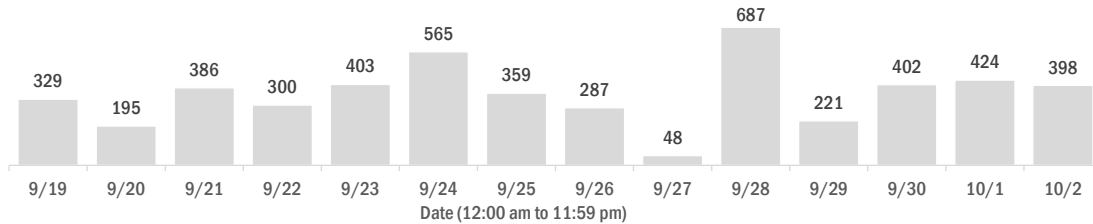
Data through Oct 2, 2020 verified as of Oct 3, 2020 at 08:25 AM

Data in this report are provisional and subject to change.

## Laboratory testing for Florida residents over the past 2 weeks

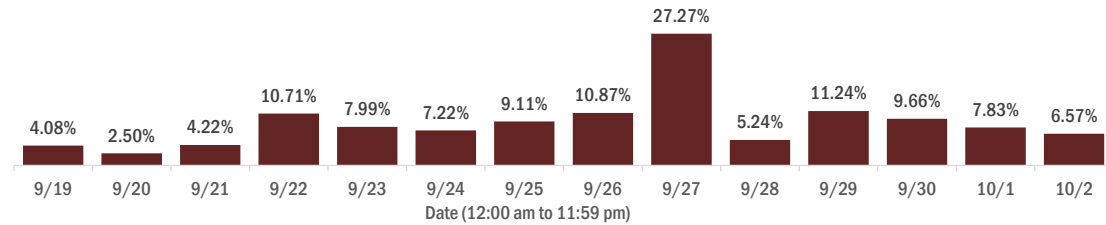
### Number of Florida residents who tested negative per day

These counts include the number of people for whom the Department received negative PCR or antigen laboratory results by day. People who tested negative on multiple days will be included once for each day they are tested. Negative results for persons who have previously tested positive are excluded.



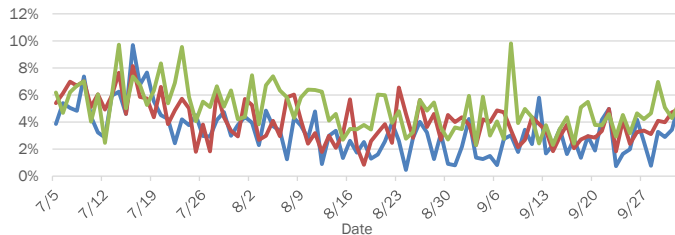
### Percent positivity for new cases in Florida residents

These counts include the number of Florida residents for whom the department received PCR or antigen laboratory results by day. This percent is the number of people who test positive for the first time divided by all the people tested that day, excluding people who have previously tested positive.

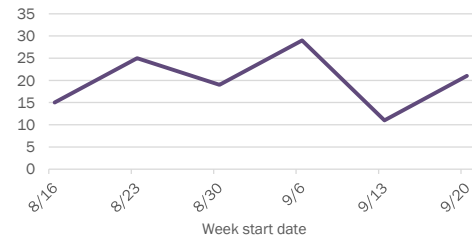


## Emergency department (ED) and freestanding ED (FSED) chief complaint and admission data for Okaloosa County

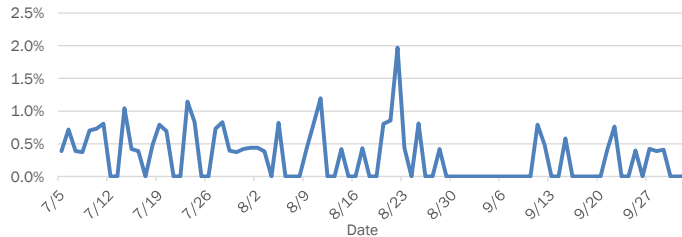
### Daily percent of ED visits mentioning cough, fever, or shortness of breath



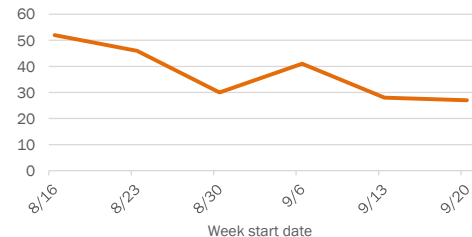
### Weekly count of ED and FSED visits for influenza-like illness



### Daily percent of ED visits resulting in cough-associated admissions



### Weekly count of ED and FSED visits for COVID-like illness



The Electronic Surveillance System for the Early Notification of Community-Based Epidemics (ESSENCE-FL) includes chief complaint data from 211 of 212 Florida EDs and 77 of 80 Florida FSEDs. Data are transmitted electronically to ESSENCE-FL daily or hourly.