

COVID-19: summary for Okaloosa County

Data through Oct 6, 2020 verified as of Oct 7, 2020 at 09:25 AM

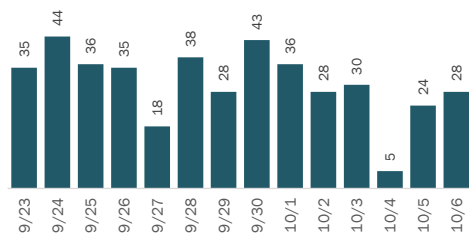
Data in this report are provisional and subject to change.

Cases: people with positive PCR or antigen test result

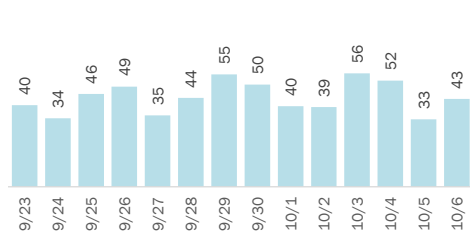
Total cases	5,232
Florida residents	5,189
Non-Florida residents	43
Type of case	
PCR positive	5,032
Antigen positive	157
Gender for Florida residents	
Men	2,359
Women	2,783
Unknown	47
Age for Florida residents	
Range	0 - 103
Median age	40

Cases in Florida residents by date case confirmed

Cases



Median age



Race, ethnicity	Cases	Hospitalizations	Deaths
White	2,761 53%	201 66%	84 71%
Hispanic	355 7%	24 8%	3 3%
Non-Hispanic	2,274 44%	173 57%	68 58%
Unknown ethnicity	132 3%	4 1%	13 11%
Black	446 9%	48 16%	14 12%
Hispanic	10 0%	0 0%	0 0%
Non-Hispanic	411 8%	47 15%	13 11%
Unknown ethnicity	25 0%	1 0%	1 1%
Other	1,028 20%	41 13%	14 12%
Hispanic	245 5%	12 4%	4 3%
Non-Hispanic	709 14%	26 9%	8 7%
Unknown ethnicity	74 1%	3 1%	2 2%
Unknown race	954 18%	14 5%	6 5%
Hispanic	31 1%	3 1%	0 0%
Non-Hispanic	158 3%	2 1%	2 2%
Unknown ethnicity	765 15%	9 3%	4 3%
Total	5,189	304	118

Outcomes for Florida residents

Okaloosa

Hospitalizations	304	(6% of all cases)
Deaths	118	(2% of all cases)
New deaths	1	

Statewide

Hospitalizations	45,259	(6% of all cases)
Deaths	14,904	(2% of all cases)
New deaths	131	

New deaths are those reported on Oct 6

Cases in facility staff/residents

Okaloosa

Long-term care	554	(11% of all cases)
Correctional	94	(2% of all cases)

Statewide

Long-term care	47,828	(7% of all cases)
Correctional	23,262	(3% of all cases)

Age group	All cases	New cases (10/06)	Hospitalizations	Deaths
0-4 years	59 1%	0 0%	0 0%	0 0%
5-14 years	182 4%	2 7%	2 1%	0 0%
15-24 years	870 17%	2 7%	8 3%	0 0%
25-34 years	1,015 20%	5 18%	21 7%	4 3%
35-44 years	808 16%	5 18%	29 10%	1 1%
45-54 years	687 13%	3 11%	35 12%	6 5%
55-64 years	693 13%	7 25%	54 18%	12 10%
65-74 years	441 8%	3 11%	56 18%	14 12%
75-84 years	254 5%	1 4%	65 21%	36 31%
85+ years	172 3%	0 0%	34 11%	45 38%
Unknown	8 0%	0 0%	0 0%	0 0%
Total	5,189	28	304	118

Hospitalization counts include anyone who was hospitalized at some point during their illness. It does not reflect the number of people currently hospitalized.

Other race includes any person with a race of American Indian/Alaskan native, Asian, native Hawaiian/Pacific Islander, or other.

COVID-19: summary for Okaloosa County

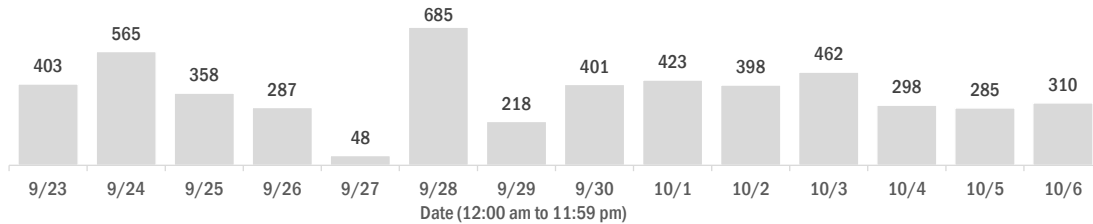
Data through Oct 6, 2020 verified as of Oct 7, 2020 at 09:25 AM

Data in this report are provisional and subject to change.

Laboratory testing for Florida residents over the past 2 weeks

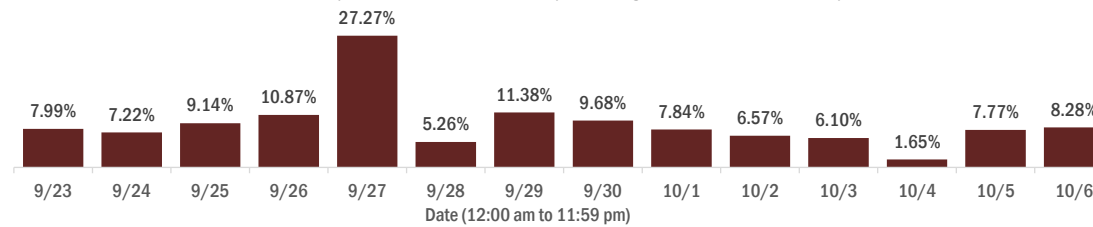
Number of Florida residents who tested negative per day

These counts include the number of people for whom the Department received negative PCR or antigen laboratory results by day. People who tested negative on multiple days will be included once for each day they are tested. Negative results for persons who have previously tested positive are excluded.



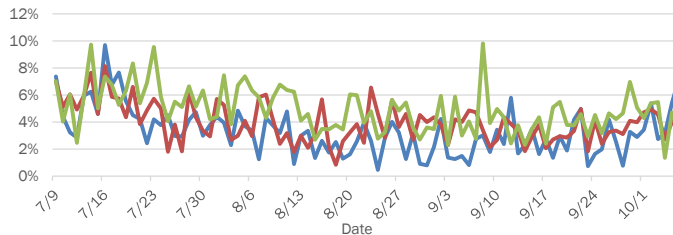
Percent positivity for new cases in Florida residents

These counts include the number of Florida residents for whom the department received PCR or antigen laboratory results by day. This percent is the number of people who test positive for the first time divided by all the people tested that day, excluding people who have previously tested positive.

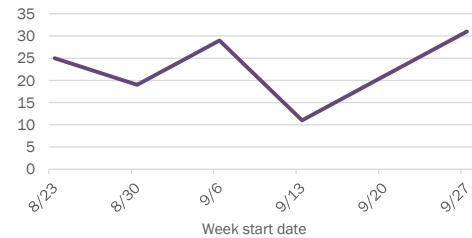


Emergency department (ED) and freestanding ED (FSED) chief complaint and admission data for Okaloosa County

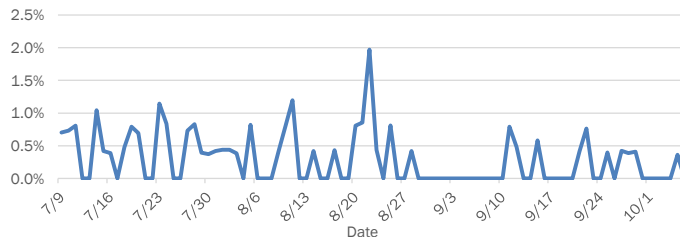
Daily percent of ED visits mentioning cough, fever, or shortness of breath



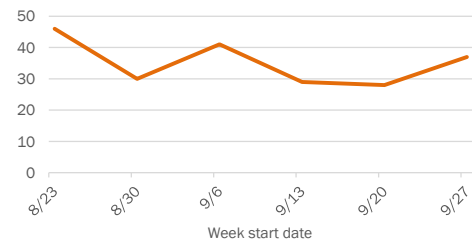
Weekly count of ED and FSED visits for influenza-like illness



Daily percent of ED visits resulting in cough-associated admissions



Weekly count of ED and FSED visits for COVID-like illness



The Electronic Surveillance System for the Early Notification of Community-Based Epidemics (ESSENCE-FL) includes chief complaint data from 211 of 212 Florida EDs and 77 of 80 Florida FSEDs. Data are transmitted electronically to ESSENCE-FL daily or hourly.