

Weekly Disease Surveillance Report



2021 Reporting Week 24 : June 13 - June 19

This weekly report is produced by the DOH-Okaloosa Epidemiology Section to provide situational awareness to community partners. Data is subject to change as additional information is gathered.

Reminder: Reporting of COVID-19 for Health Care Providers and Facilities June 16, 2021

Recently, the Agency for Healthcare Administration (AHCA) announced the removal of the specific requirement for healthcare facilities to report COVID-19 information into the emergency status system (ESS).

However, the Florida Department of Health (DOH) is providing this reminder and clarification that **COVID-19-diagnoses and reporting of all COVID-19 testing results, as well as any outbreaks of COVID-19, are STILL subject to mandatory reporting to the DOH under section 381.0031, Florida Statutes, Chapter 64D-3, Florida Administrative Code and Emergency Rule No. 64DER21-8.**

A copy of the guidance provided by DOH can be found on [page 5](#) of this Weekly Disease Surveillance Report.

The Okaloosa CHD EPI services continue to be staffed 7 days a week. Please do not hesitate to contact us for questions regarding COVID-19 or any other FL reportable diseases and or conditions. Information on how to report diseases via phone or fax can be found in the adjacent yellow box.

Contact Us:

Florida Department of Health
in Okaloosa County

Epidemiology Section

24/7 Disease Reporting:
850-833-9065

Confidential Fax:
850-833-7577

okaloosaepi@flhealth.gov

Total ED Visits by Syndrome

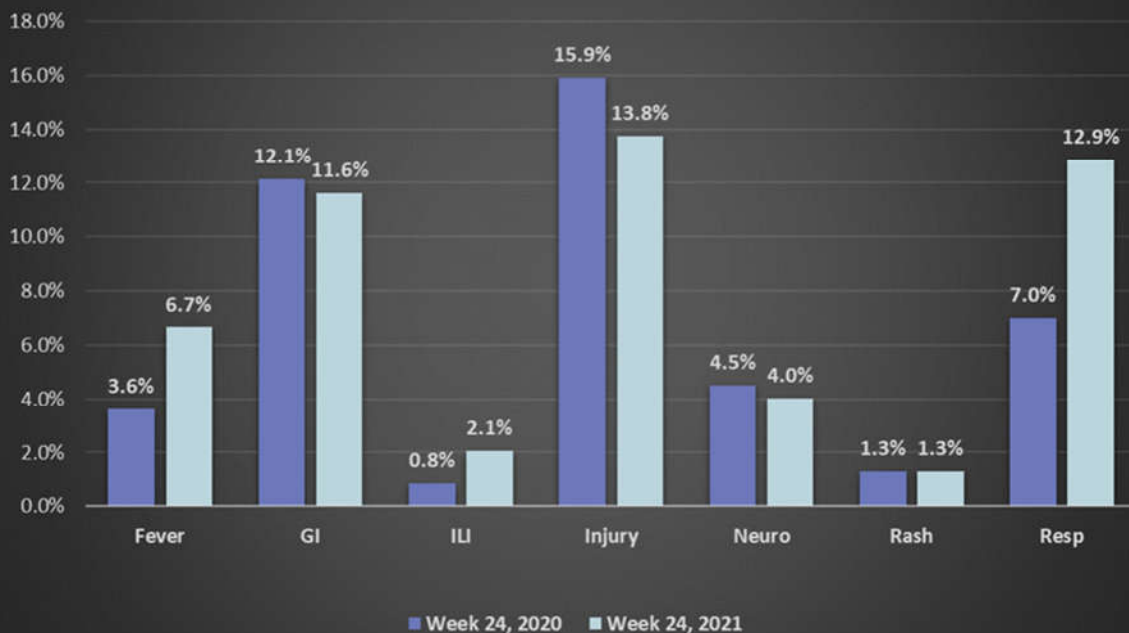


Figure 1:

Hospital Emergency Department (ED) visits from 2021 Week 24 by select syndrome category. Percentages calculated based on total number of ED visits (n=2464). Some syndrome categories are not represented; therefore, represented percentages will not total 100%.

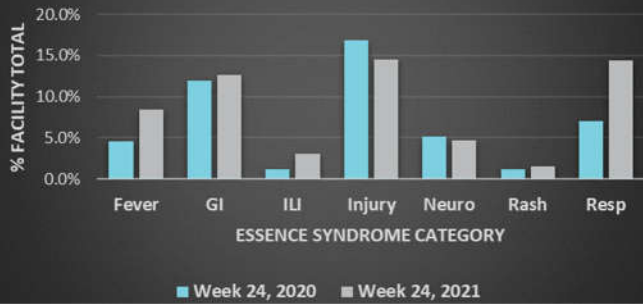
Data source:
ESSENCE



Syndromic Surveillance

Okaloosa Hospital Emergency Department (ED) Visits

Fort Walton Beach Medical Center ED Presentations



Week 24—Fort Walton Beach Medical Center

Age Range	Top Syndrome	Total ED Visits for Syndrome
0-4	RESP	72
5-19	INJURY	28
20-34	GI	41
35-54	INJURY	47
55-74	GI	38
75+	INJURY	20

North Okaloosa Medical Center ED Presentations



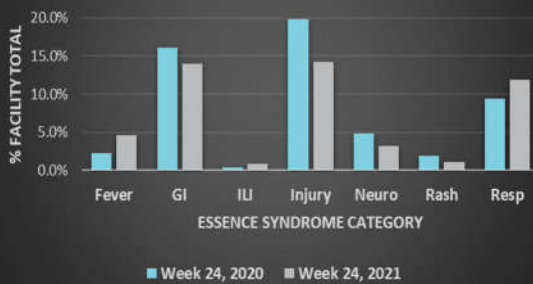
Week 24—Okaloosa County

Age Group	Top Syndrome
0-4	RESP
5-19	INJURY
20-34	GI
35-54	INJURY
55-74	GI
75+	INJURY

Week 24—North Okaloosa Medical Center

Age Range	Top Syndrome	Total ED Visits for Syndrome
0-4	FEVER	17
5-19	INJURY	10
20-34	GI	13
35-54	INJURY	19
55-74	RESP	23
75+	INJURY	11

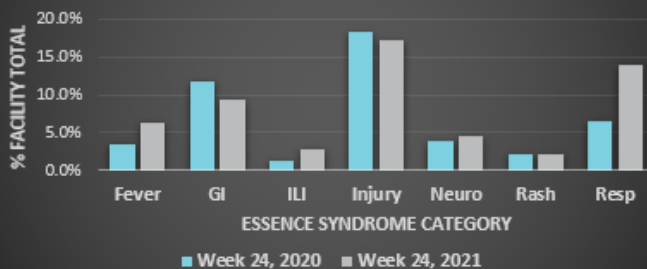
Twin Cities Hospital ED Presentations



Week 24—Twin Cities Hospital

Age Range	Top Syndrome	Total ED Visits for Syndrome
0-4	RESP	14
5-19	INJURY, RESP	7, 7
20-34	GI, INJURY	9, 9
35-54	GI	17
55-74	GI	14
75+	INJURY	15

DestinER ED Presentations



Week 24—DestinER

Age Range	Top Syndrome	Total ED Visits for Syndrome
0-4	RESP	21
5-19	INJURY	10
20-34	INJURY	12
35-54	INJURY	11
55-74	INJURY	7
75+	INJURY	4



COVID-19 Fully Vaccinated = No Quarantine

COVID-19 in Okaloosa County

Week 24 Review		Difference from Wk23
Resident Case Count	84	- 1
Resident Case Count per 100K Population	40.7	- 0.5
Average Resident Cases per Day	12.0	- 0.1
Percent Positivity	5.9%	- 0.2
Deaths	2	0
Cumulative Cases since March 2020	21,114	
Cumulative Deaths since March 2020	372	

COVID-19 Community Risk Level		
Community Risk Level	New Cases per 100K Population per Week	% Positivity per Week
Low	<10	<5%
Moderate	10-49	5-7.9%
Substantial	50-99	8-9.9%
High	>100	>10%

Week 24 Risk Level		
MODERATE	40.7	5.9%

PREVIOUS WEEK RISK LEVEL: MODERATE

Community risk level is the color of the higher risk level for the two indicators. Data Source : CDC [Community Indicators at the County Level](#)

Vaccination Impact in Okaloosa

Fully Vaccinated Okaloosa Residents	
Age Group	% Fully Vaccinated
12-14	6.4%
15-24	15.4%
25-44	20.5%
45-64	43.4%
65-74	73.6%
75-84	76.3%
85 +	79.2%
12 - 85+	36.2%

PLEASE NOTE:
The Week 23 percentage for the Fully Vaccinated Okaloosa Residents 12-85+ Age Group was incorrectly reported as 38.5%. The correct percentage was 34.9%.

COVID-19 Vaccinations: Okaloosa vs. US

	OKALOOSA	US
% of Population ≥ 12 Years of Age	36.2%	52.9%
% of Population ≥ 65 Years of Age	75.8%	77.1%

Data reported through previous Sunday. Data Source: CDC [COVID Data Tracker](#)

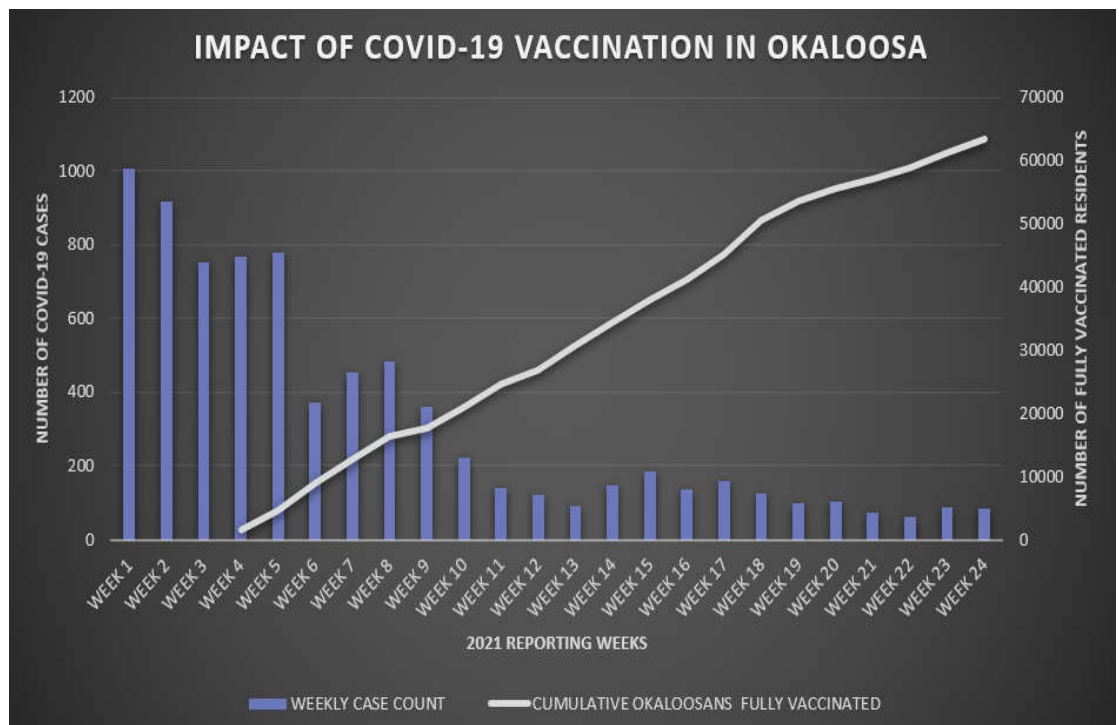


Figure 2:

Cumulative number of fully vaccinated Okaloosa residents as compared to COVID-19 cases per week. Data reported through previous Sunday.

Data Source: Merlin Database

Influenza-Like Illness (ILI)

Influenza-like Illness (ILI): Fever greater than or equal to 100°F AND cough and/or sore throat in the absence of another known cause.

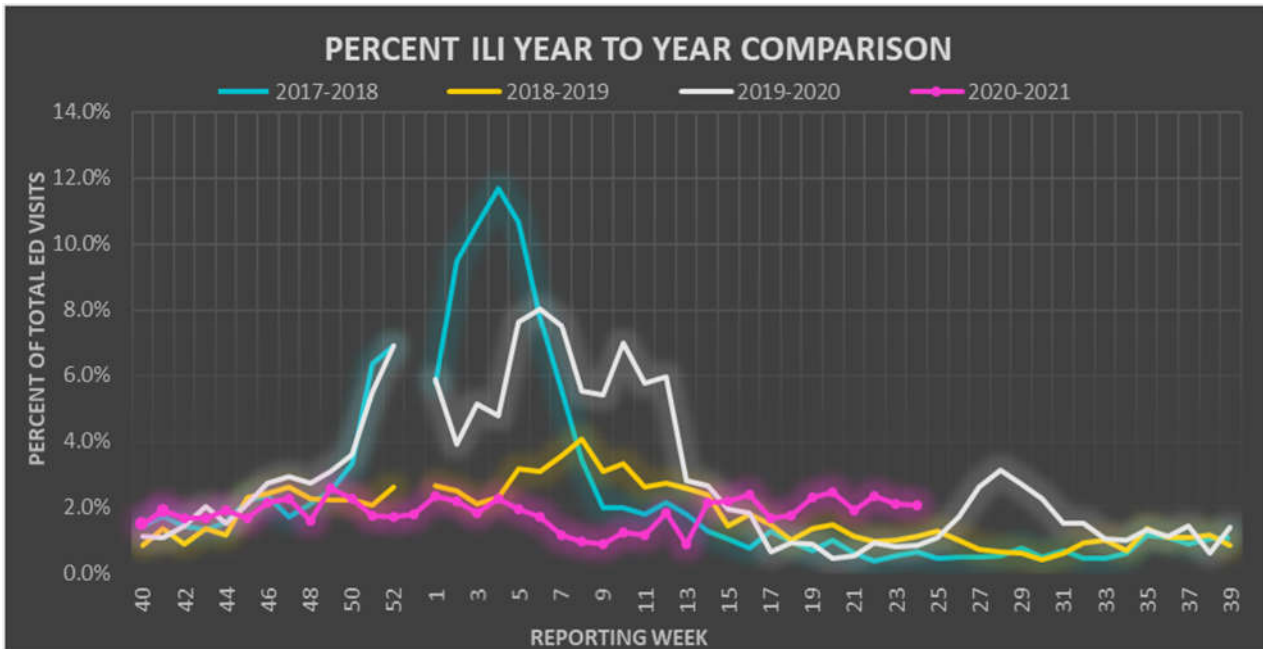


Figure 3: Annual comparison of the percent of all hospital ED visits due to ILI for Okaloosa county for the 2017-18, 2018-19, 2019-20, and 2020-21 influenza seasons by week. Data source: ESSENCE

ANALYSIS: During Week 24, flu reporting partners and ESSENCE (a syndromic surveillance system) reported a plateau in ILI activity for Okaloosa County. The percentage of ILI ED visits in Okaloosa County slightly decreased from 2.11% during Week 23 to 2.07% during Week 24. Flu partners reported no positive rapid influenza tests this week. Over the past three weeks, 3 out of 68 influenza specimens submitted to the state lab were positive (2 Influenza A unspecified and 1 Influenza B unspecified). There were no reported ILI admissions, outbreaks, or deaths reported this week. The percentage of total ILI ED visits for Week 24 is higher than that of Week 24 last year. *Note:* Other respiratory syndromes can be represented by increased ILI case numbers. Data Source: ESSENCE

% ILI by Age Group Week 24, 2021			
Age Range	ILI Visits	Total ED Visits	% Total ILI Visits
0-4	30	312	9.62%
5-19	12	272	4.41%
20-34	5	513	0.97%
35-54	3	588	0.51%
55-74	1	532	0.19%
75+	0	245	0.00%

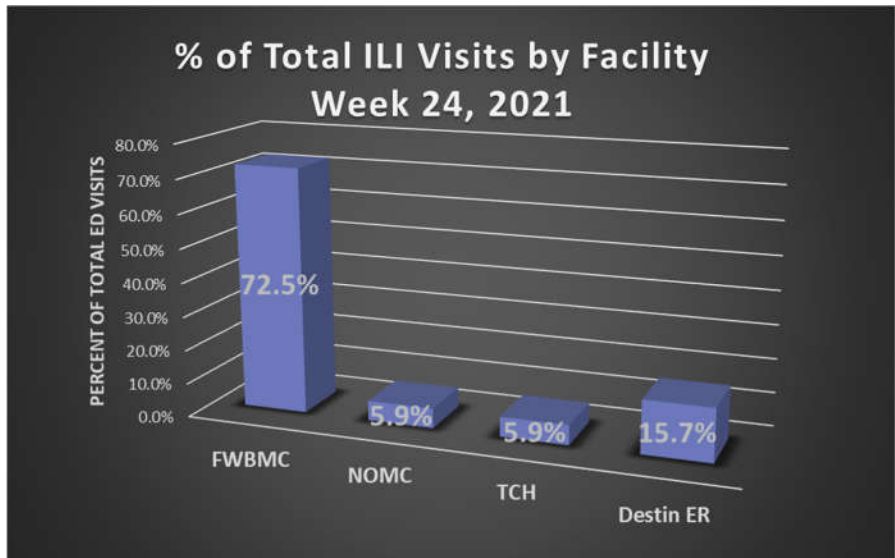


Figure 4: Hospital ED visits meeting ILI criteria stratified by facility. Percentages calculated based on total number of ILI ED visits. (n=2464). Data source: ESSENCE

Mission:

To protect, promote & improve the health of all people in Florida through integrated state, county & community efforts.



Ron DeSantis
Governor

Scott A. Rivkees, MD
State Surgeon General

Vision: To be the **Healthiest State** in the Nation

Reminder: Reporting of COVID-19 for Health Care Providers and Facilities June 16, 2021

COVID-19-positive patients and COVID-19 laboratory results are subject to mandatory reporting to the Florida Department of Health (Department) under section 381.0031, Florida Statutes, Chapter 64D-3, Florida Administrative Code and Emergency Rule No. 64DER21-8.

All positive, negative, and indeterminate COVID-19 laboratory results must be reported to the Department via electronic laboratory reporting (ELR) or by FAX within 24 hours. This includes all COVID-19 test types: polymerase chain reaction (PCR), other RNA, antigen, and antibody tests. If your facility is conducting in-house COVID-19 testing and needs to establish reporting through a Web portal or set up an ELR feed with the Department, please begin the enrollment process by visiting our enrollment website: <http://floridahealth.gov/electronicreportingregistration>. Until your ELR feed is in the Department's production, FAX results to your [county health department](http://www.floridahealth.gov/diseases-and-conditions/disease-reporting-and-management/chd-epi-contacts/) (www.floridahealth.gov/diseases-and-conditions/disease-reporting-and-management/chd-epi-contacts/).

Suspected or confirmed outbreaks of COVID-19 in long-term care facilities or similar group settings such as assisted living facilities, must be reported immediately and are defined as:

- One or more facility-acquired laboratory-confirmed¹ COVID-19 cases in a resident.
- Two or more laboratory-confirmed COVID-19 cases in staff with epidemiological linkage² who do not share a household and are not listed as a close contact³ of each other outside of the workplace during standard case investigation or contact tracing.

Patients with confirmed or suspected COVID-19 or close contact with a case should be provided the following resources to help prevent disease transmission:

- [Persons with confirmed COVID-19](#)
- [Self-isolation guidance](#)
- [Contact tracing for COVID-19](#)
- [Close contacts to COVID-19](#)

Resources

[Preparing for COVID-19 in Nursing Homes](#)
[Interim Infection Prevention and Control Recommendations for Healthcare Personnel](#)
[What you need to know now about COVID-19 in Florida](#)

¹Laboratory confirmation: detection of SARS-CoV-2 RNA in a clinical specimen using a PCR or antigen test.

²Epidemiological linkage: cases were present in the setting during the same time period (e.g. same classroom, school event, work shift or department) within 14 days prior to the event date and that there is no other more likely source of exposure for identified cases (e.g. same household).

³Close contact: being within six feet of an infected person for a cumulative total of 15 minutes or more over a 24-hour period starting two days before illness onset or specimen collection date (if asymptomatic) and during the infectious period.