

Weekly Disease Surveillance Report



2024 Reporting Week 38: September 15 — September 21

This weekly report is produced by the DOH-Okaloosa Epidemiology Section to provide situational awareness to community partners. Data is subject to change as additional information is gathered.

Recent CDC Health Advisories

***NEW* 09/23/24:** [HAN 00516 - Prevention Strategies for Mpox, including Vaccinating People at Risk via Sexual Exposure for US Travelers Visiting Countries with Clade I Mpox Outbreaks](#)

08/16/24: [HAN 00515 - Increased Oropouche Virus Activity and Associated Risk to Travelers](#)

08/13/24: [HAN 00514 - Increase in Human Parvovirus B19 Activity in the United States](#)

08/07/24: [HAN 00513 - Mpox Caused by Human-to-Human Transmission of *Monkeypox Virus* in the Democratic Republic of the Congo with Spread to Neighboring Countries](#)

07/23/24: [HAN 00512 - Disruptions in Availability of Becton Dickinson \(BD\) BACTEC™ Blood Culture Bottles Blood Culture Bottles](#)

ILI Trends

Influenza-like illness (ILI) in Okaloosa plateaued during Week 38 and is below the previous year's level (current level: 2.3%; last year: 3.4%). Please stay vigilant, promote vaccination, and visit the weekly [Florida FLU REVIEW](#).

Contact Us:

**Florida Department of Health
in Okaloosa County**

Epidemiology Section

**24/7 Disease Reporting:
850-833-9065**

**Confidential Fax:
850-833-7577**

okaloosaepi@flhealth.gov

COVID-19 Corner

Week 38 Data Update

Effective May 1, 2024, hospitals are no longer required to report COVID-19 hospital admissions, hospital capacity, or hospital occupancy data to HHS through CDC's National Healthcare Safety Network (NHSN). CDC encourages ongoing, voluntary reporting of hospitalization data. Data voluntarily reported to NHSN after May 1, 2024, will be available starting May 10, 2024, at [COVID Data Tracker Hospitalizations](#).

The source of hospital information on the COVID Data Tracker home page will change from the National Healthcare Safety Network (NHSN) to COVID-NET. Instead of displaying national counts of new hospital admissions, it will show COVID-19 hospitalization rates per 100,000 people. More information on COVID-Net is available on [COVID-NET Laboratory-confirmed COVID-19 Hospitalizations](#).

In the Know: *Salmonella* + Milo's Eggs

The CDC has issued a [Food Safety Alert](#) related to *Salmonella enteritidis* found in all egg types labeled with "Milo's Poultry Farms" or "Tony's Fresh Market." As of September 6, there are 65 people infected with the outbreak strain of *Salmonella* from 9 states, including CA, CO, IL, IA, MI, ME, UT, VI, and WI. These infections have resulted in 24 hospitalizations (no deaths).

Epidemiologic, laboratory, and traceback data show that eggs supplied by Milo's Poultry Farms are contaminated with *Salmonella* and are making people sick. Illness onset ranges from May 23, 2024, to August 10, 2024.

Most people infected with *Salmonella* experience diarrhea, fever, and stomach cramps. Symptoms usually start 6 hours to 6 days after swallowing the bacteria. Most people recover without treatment after 4 to 7 days, but some people—especially children younger than 5 years, adults 65 years and older, and people with weakened immune systems—may experience more severe illnesses that require medical treatment or hospitalization.

For more information about *Salmonella*, see [the *Salmonella* Questions and Answers page](#).



Influenza-Like Illness

Week 38: September 15 – September 21

Influenza-like Illness (ILI) is defined as fever greater than or equal to 100°F AND cough and/or sore throat in the absence of another known cause.

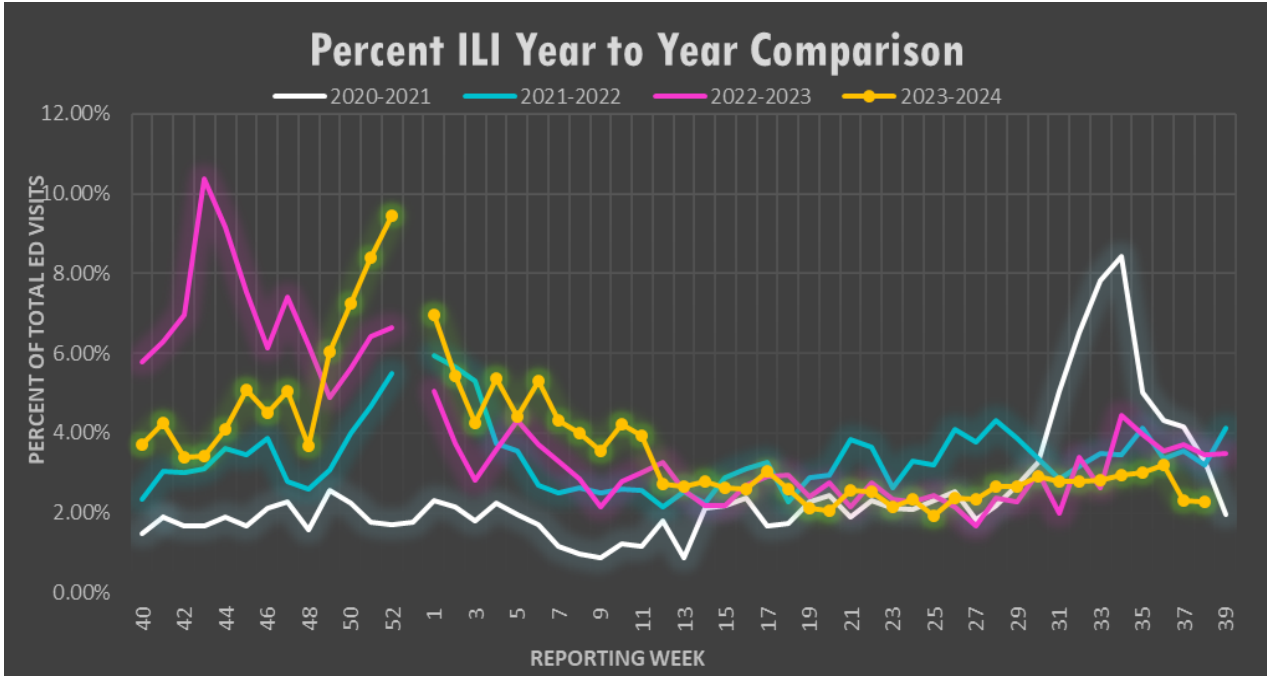


Figure 2: Annual comparison of the percent of all hospital ED visits due to ILI for Okaloosa county for the 2020-21, 2021-22, 2022-23 and 2023-2024 influenza seasons by week. Data source: ESSENCE

ANALYSIS: During Week 38, flu reporting partners and ESSENCE (a syndromic surveillance system) reported a decrease in ILI activity for Okaloosa County. The percentage of ILI ED visits in Okaloosa County plateaued this week (2.31% during Week 37 to 2.28% during Week 38). Flu partners reported 3 positive rapid flu tests this week (3 Influenza B). There were no ILI admissions or deaths reported by flu partners this week. No outbreaks have been reported in the past 3 weeks. The percentage of total ILI ED visits for Week 38 is below that of Week 38 last year. *Note:* Other respiratory syndromes can be represented by increased ILI case numbers. Data Source: ESSENCE

| % ILI by Age Group Week 38, 2024 | | | |
|-------------------------------------|------------|-----------------|--------------------|
| Age Range | ILI Visits | Total ED Visits | % Total ILI Visits |
| 0-4 | 13 | 146 | 8.90% |
| 5-19 | 17 | 321 | 5.30% |
| 20-34 | 13 | 553 | 2.35% |
| 35-54 | 10 | 653 | 1.53% |
| 55-74 | 5 | 617 | 0.81% |
| 75+ | 2 | 332 | 0.60% |

Data Source: ESSENCE

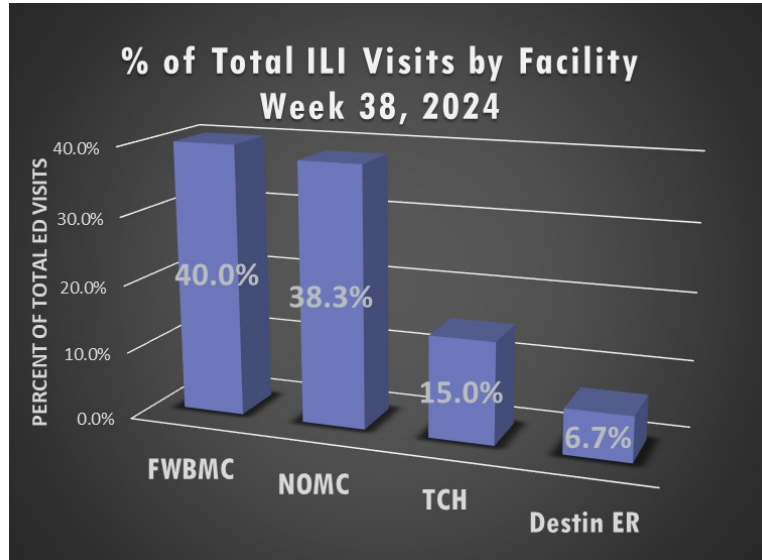


Figure 3: Hospital ED visits meeting ILI criteria stratified by facility. Percentages calculated based on total number of ILI ED visits. (n=60). Data source: ESSENCE



Syndromic Surveillance

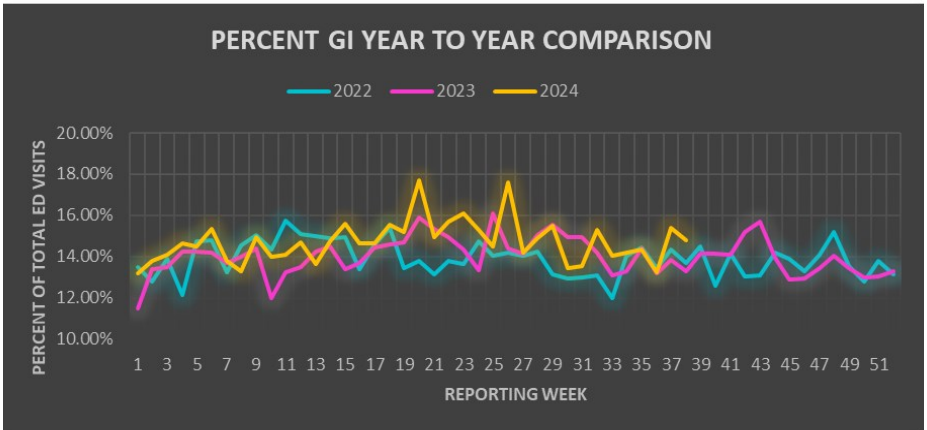
Week 38: September 15 – September 21

Gastro-intestinal Illness (GI)

Figure 4:

Annual comparison for the percent of GI for all Okaloosa County hospital ED visits week to week for 2022, 2023, and 2024.

Data Source: ESSENCE

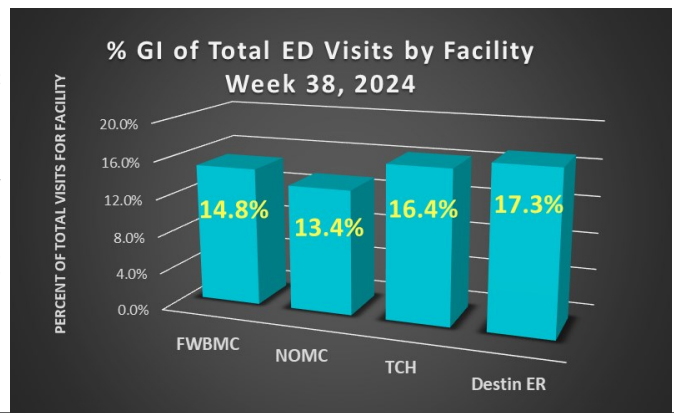


| % GI by Age Group Week 38, 2024 | | | |
|------------------------------------|-----------|-----------------|-------------------|
| Age Range | GI Visits | Total ED Visits | % Total GI Visits |
| 0-4 | 21 | 146 | 14.38% |
| 5-19 | 53 | 321 | 16.51% |
| 20-34 | 120 | 553 | 21.70* |
| 35-54 | 86 | 653 | 13.17% |
| 55-74 | 75 | 617 | 12.16% |
| 75+ | 34 | 332 | 10.24% |

Figure 5:

Hospital emergency room visits due to GI illness stratified by facility.

Data source: ESSENCE

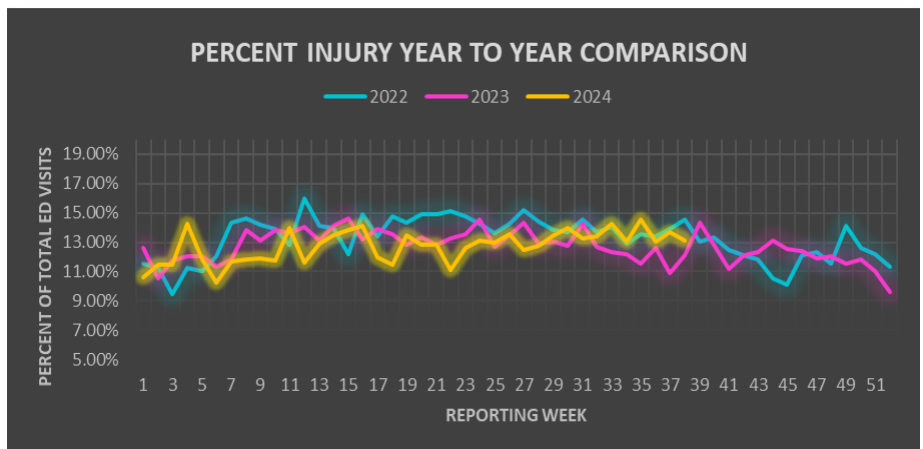


Injury

Figure 6:

Annual comparison for the percent of Injury for all Okaloosa County hospital ED visits week to week for 2021, 2022, and 2023.

Data Source: ESSENCE

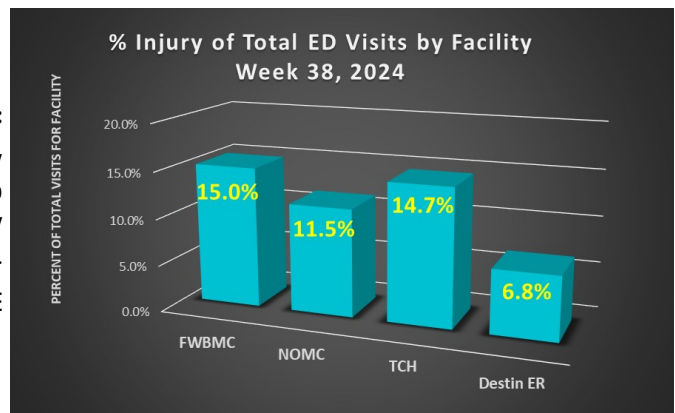


| % Injury by Age Group Week 38, 2024 | | | |
|--|---------------|-----------------|-----------------------|
| Age Range | Injury Visits | Total ED Visits | % Total Injury Visits |
| 0-4 | 19 | 146 | 13.01% |
| 5-19 | 53 | 321 | 16.51% |
| 20-34 | 63 | 553 | 11.39% |
| 35-54 | 81 | 653 | 12.40% |
| 55-74 | 69 | 617 | 11.18% |
| 75+ | 60 | 332 | 18.07% |

Figure 7:

Hospital emergency room visits due to Injury stratified by facility.

Data source: ESSENCE





Syndromic Surveillance

Week 38: September 15 – September 21

Total ED Visits by Syndrome

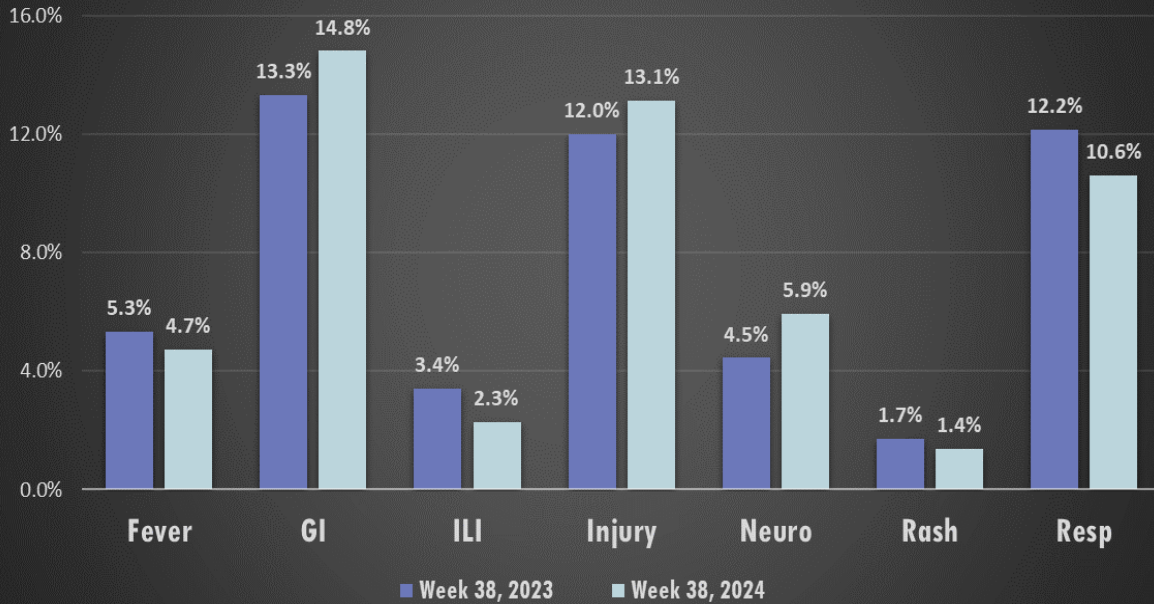
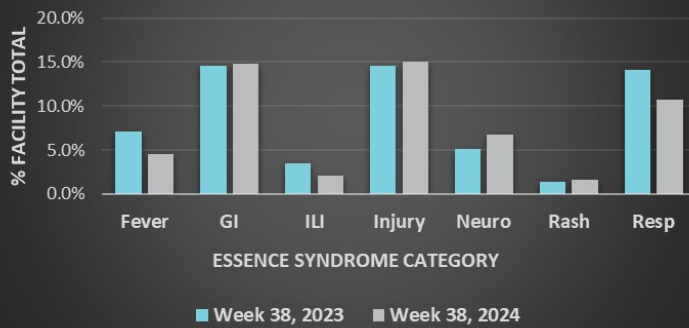


Figure 8: Hospital Emergency Department (ED) visits from 2024 Week 38 by select syndrome category. Percentages calculated based on total number of ED visits (n=2627). Some syndrome categories are not represented; therefore, represented percentages will not total 100%. Data source: ESSENCE

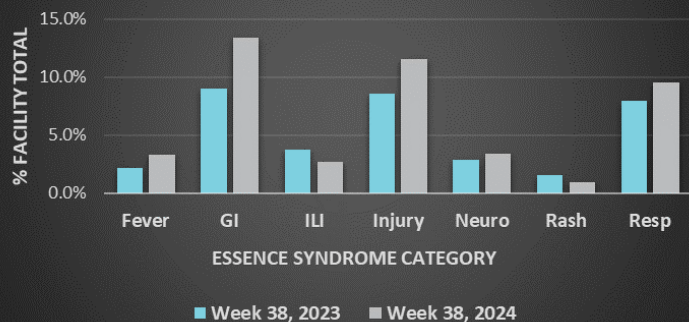
Fort Walton Beach Medical Center ED Presentations



Week 38 - Fort Walton Beach Medical Center

| Age Range | Top Syndrome | Total ED Visits for Syndrome |
|-----------|--------------|------------------------------|
| 0-4 | RESP | 17 |
| 5-19 | GI | 33 |
| 20-34 | GI | 46 |
| 35-54 | INJURY | 40 |
| 55-74 | INJURY | 38 |
| 75+ | INJURY | 30 |

North Okaloosa Medical Center ED Presentations



Week 38 - North Okaloosa Medical Center

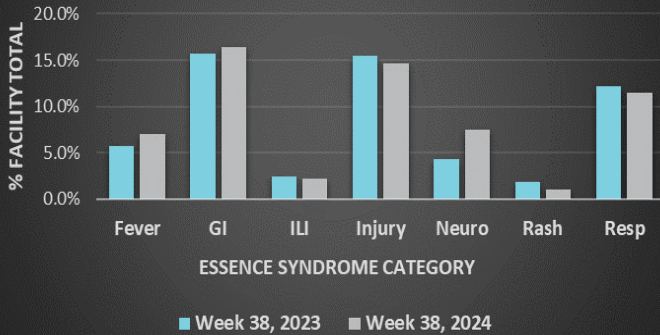
| Age Range | Top Syndrome | Total ED Visits for Syndrome |
|-----------|--------------|------------------------------|
| 0-4 | FEVER, RESP | 12, 12 |
| 5-19 | INJURY | 20 |
| 20-34 | GI | 43 |
| 35-54 | INJURY | 27 |
| 55-74 | RESP | 21 |
| 75+ | RESP | 11 |



Syndromic Surveillance

Week 38: September 15 – September 21

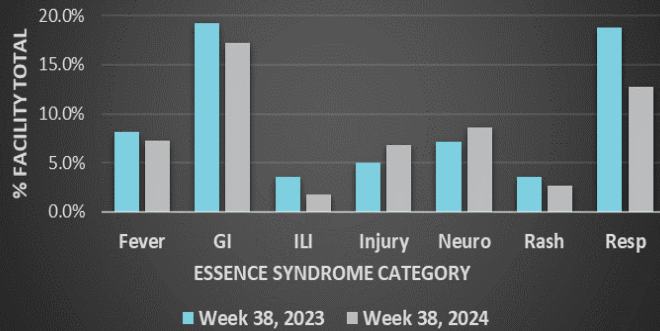
Twin Cities Hospital ED Presentations



Week 38 - Twin Cities Hospital

| Age Range | Top Syndrome | Total ED Visits for Syndrome |
|-----------|--------------|------------------------------|
| 0-4 | RESP | 7 |
| 5-19 | INJURY | 11 |
| 20-34 | GI | 20 |
| 35-54 | GI | 15 |
| 55-74 | GI | 19 |
| 75+ | INJURY | 17 |

Destin ER ED Presentations

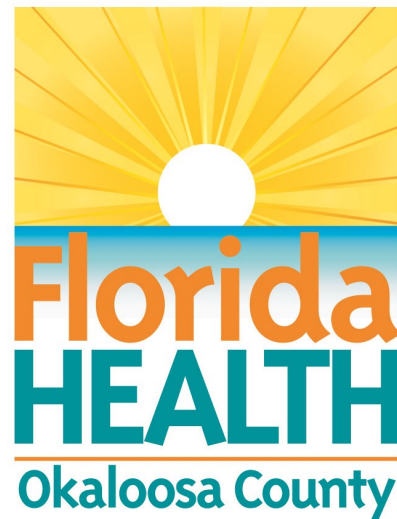


Week 38- Destin ER

| Age Range | Top Syndrome | Total ED Visits for Syndrome |
|-----------|---------------------|------------------------------|
| 0-4 | RESP | 4 |
| 5-19 | FEVER, INJURY, RESP | 4, 4, 4 |
| 20-34 | GI | 11 |
| 35-54 | GI, NEURO | 9, 9 |
| 55-74 | GI | 10 |
| 75+ | GI | 4 |

Week 38 - Okaloosa County

| Age Group | Top Syndrome |
|-----------|--------------|
| 0-4 | RESP |
| 5-19 | GI, INJURY |
| 20-34 | GI |
| 35-54 | GI |
| 55-74 | GI |
| 75+ | INJURY |



Data Source: ESSENCE