

Weekly Disease Surveillance Report



2022 Reporting Week 09: February 27 – March 5

This weekly report is produced by the DOH-Okaloosa Epidemiology Section to provide situational awareness to community partners. Data is subject to change as additional information is gathered.

NEW COVID-19 Community Level Indicator & Trends

The CDC has developed a new tool titled [COVID-19 Community Levels](#) to help communities and individuals determine which prevention steps should be implemented based on local hospital and COVID-19 case numbers. The COVID-19 Community Level will be identified as Low, Medium, or High and will now be focused on indicators that can help predict serious outcomes or strains on the healthcare system. The original [COVID-19 Community Risk \(Transmission\) Levels](#) were put in place to guide direction for layered prevention strategies when vaccines or other therapeutics were not available and will eventually be phased out.

COVID-19 activity continues to decrease overall in Okaloosa. The COVID-19 Community Risk/Transmission Level was lowered to Moderate for Week 09 and the new Community Level indicator is LOW. As of March 8 in Okaloosa County, 4.9% of all hospital beds and 3.5% of ICU beds were occupied by COVID-19 patients. Of the hospitalized individuals, 46.7% are unvaccinated.

COVID-19 Resources

On December 27, 2021, the CDC [updated the COVID-19 isolation and quarantine recommendations](#) for the [general population](#). [Guidance for managing healthcare personnel](#) with COVID-19 exposure or infection was also updated to enhance protection for staff, patients, and visitors.

Please visit the CDC's websites for COVID-19 [vaccinations](#) and, specifically, [booster](#) shots to stay informed with the most current information, and please continue to promote the COVID-19 vaccine as it is highly effective at preventing severe disease and death.

Contact Us:

**Florida Department of Health
in Okaloosa County**

Epidemiology Section

**24/7 Disease Reporting:
850-833-9065**

Confidential Fax:

850-833-7577

okaloosaepi@flhealth.gov

COVID-19 Snapshot

Week 09 Community Level

COVID-19 Community Level	New Hospital Admissions per 100K Population (Past 7 Days)	% Staffed Beds with COVID-19 Patients (Past 7 Days)
Low	8.4	4.0%

PREVIOUS WEEK COMMUNITY LEVEL: N/A

New COVID-19 Cases Per 100,000 people in the past 7 days	Indicators	Low	Medium	High
		Fewer than 200	New COVID-19 admissions per 100,000 population (7-day total)	<10.0
	Percent of staffed inpatient beds occupied by COVID-19 patients (7-day average)	<10.0%	10.0-14.9%	≥15.0%
200 or more	New COVID-19 admissions per 100,000 population (7-day total)	NA	<10.0	≥10.0
	Percent of staffed inpatient beds occupied by COVID-19 patients (7-day average)	NA	<10.0%	≥10.0%

Week 09 Community Transmission Level

COVID-19 Community Risk Level	New Cases per 100K Population per Week	% Positivity per Week
MODERATE	42.7	4.1%

PREVIOUS WEEK RISK LEVEL: SUBSTANTIAL

Community Level	New Cases per 100K Population per Week	% Positivity per Week
Low	<10	<5%
Moderate	10-49	5-7.9%
Substantial	50-99	8-9.9%
High	>100	>10%

Community Level and Community Risk/Transmission Level are the color of the higher risk level for each of the two indicators. Data Source : CDC [Community Indicators at the County Level](#)



COVID-19 Fully Vaccinated = No Quarantine

COVID-19 in Okaloosa County

Week 09: February 27 – March 5

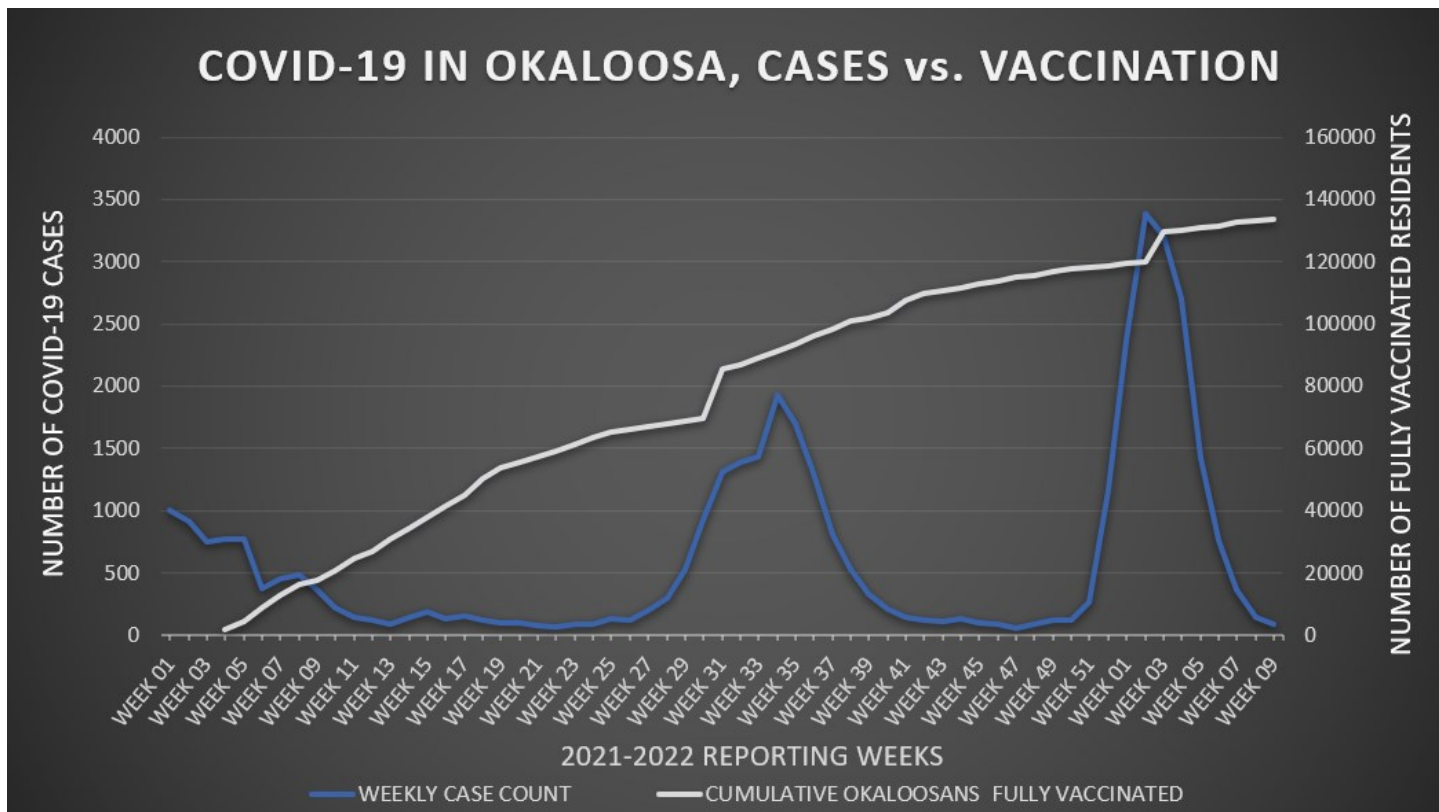


Figure 1: Cumulative number of fully vaccinated Okaloosa residents as compared to COVID-19 cases per week. Data reported through previous Sunday. Data Source: Merlin & CDC [COVID Data Tracker](#)

Week 09 Review		Difference from Wk08
Resident Case Count	90	-59
Resident Case Count per 100K Population	42.7	-29.5
Average Resident Cases per Day	12.9	-8.4
Percent Positivity	4.0%	-2.2

Data Source: Merlin Database

The Florida Department of Health (FDOH) provides the Centers for Disease Control and Prevention (CDC) with county COVID-19 data, including deaths.

Please visit the [COVID-19 Community Profile Report](#) webpage to obtain death data by downloading the most recent excel file and locating Okaloosa on the 'Counties' tab.

For questions related to COVID-19 death data, please contact the FDOH Office of Communications at 850-245-4111 or NewsMedia@flhealth.gov.

COVID-19 VACCINATIONS		
Fully-Vaccinated Groups	OKALOOSA	US
% of Population ≥ 5 Years of Age	67.7%	69.2%
% of Population ≥ 12 Years of Age	73.5%	73.6%
% of Population ≥ 18 Years of Age	76.3%	75.1%
% of Population ≥ 65 Years of Age	95.0%	88.8%

Data reported through previous Sunday. Data Source: CDC [COVID Data Tracker](#)



Influenza-Like Illness

Week 09: February 27 – March 5

Influenza-like Illness (ILI) is defined as fever greater than or equal to 100°F AND cough and/or sore throat in the absence of another known cause.

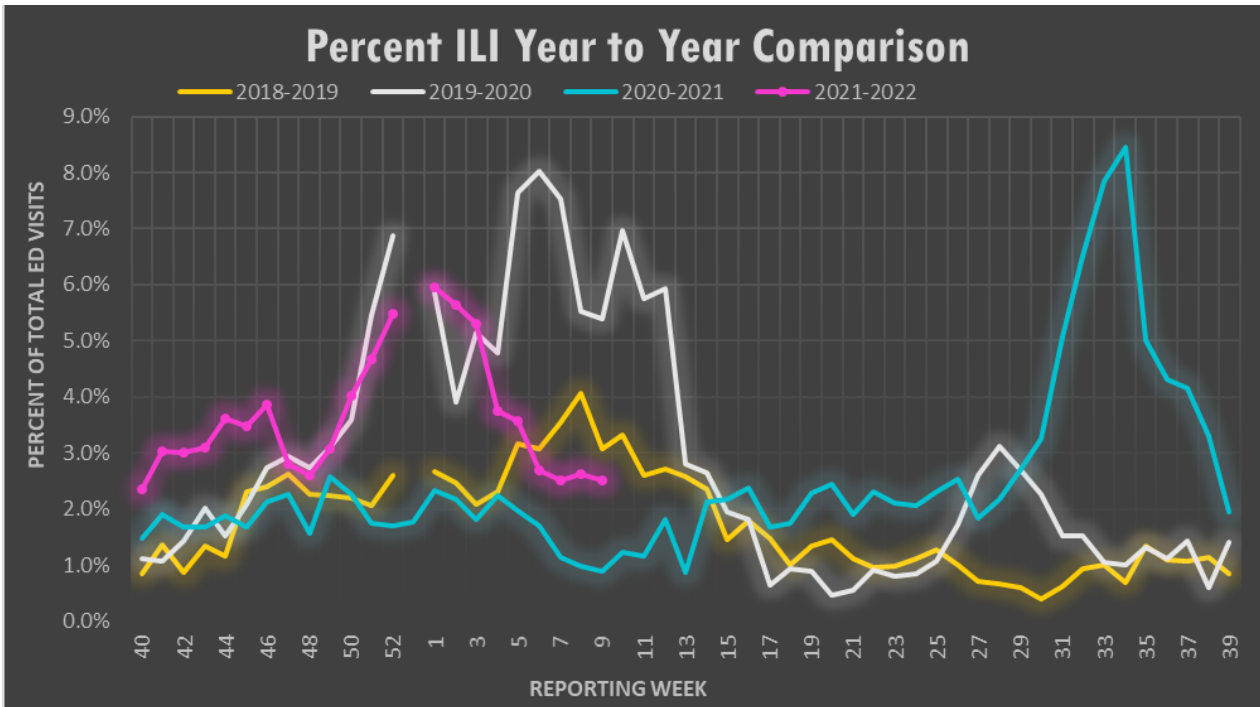


Figure 2: Annual comparison of the percent of all hospital ED visits due to ILI for Okaloosa county for the 2018-19, 2019-20, 2020-21, and 2021-22 influenza seasons by week. Data source: ESSENCE

ANALYSIS: During Week 09, flu reporting partners and ESSENCE (a syndromic surveillance system) reported a plateau in ILI activity for Okaloosa County. The percentage of ILI ED visits in Okaloosa County increased slightly from 2.62% during Week 08 to 2.51% during Week 09. Flu partners reported 7 positive rapid influenza tests this week. Over the past three weeks, 30 out of 140 influenza specimens submitted to the state lab were positive (25 Influenza A unspecified, 2 Influenza A H3, 3 Influenza B unspecified). There were no ILI admissions, outbreaks, or deaths reported this week. The percentage of total ILI ED visits for Week 09 is higher than that of Week 09 last year.

Note: Other respiratory syndromes can be represented by increased ILI case numbers. Data Source: ESSENCE

% ILI by Age Group Week 09, 2022			
Age Range	ILI Visits	Total ED Visits	% Total ILI Visits
0-4	15	129	11.63%
5-19	15	287	5.23%
20-34	10	419	2.39%
35-54	8	477	1.68%
55-74	4	463	0.86%
75+	0	291	0.00%

Data Source: ESSENCE

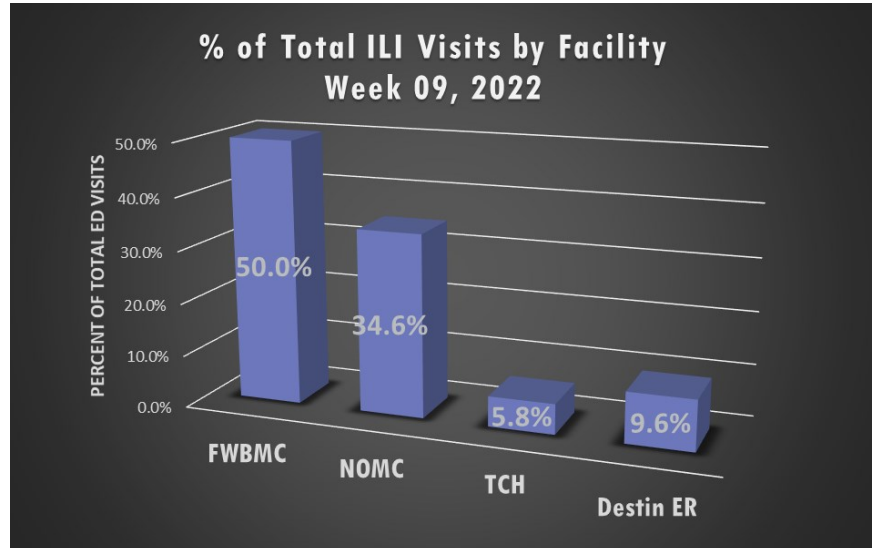


Figure 3: Hospital ED visits meeting ILI criteria stratified by facility. Percentages calculated based on total number of ILI ED visits. (n=52). Data source: ESSENCE



Syndromic Surveillance

Week 09: February 27 — March 5

Total ED Visits by Syndrome

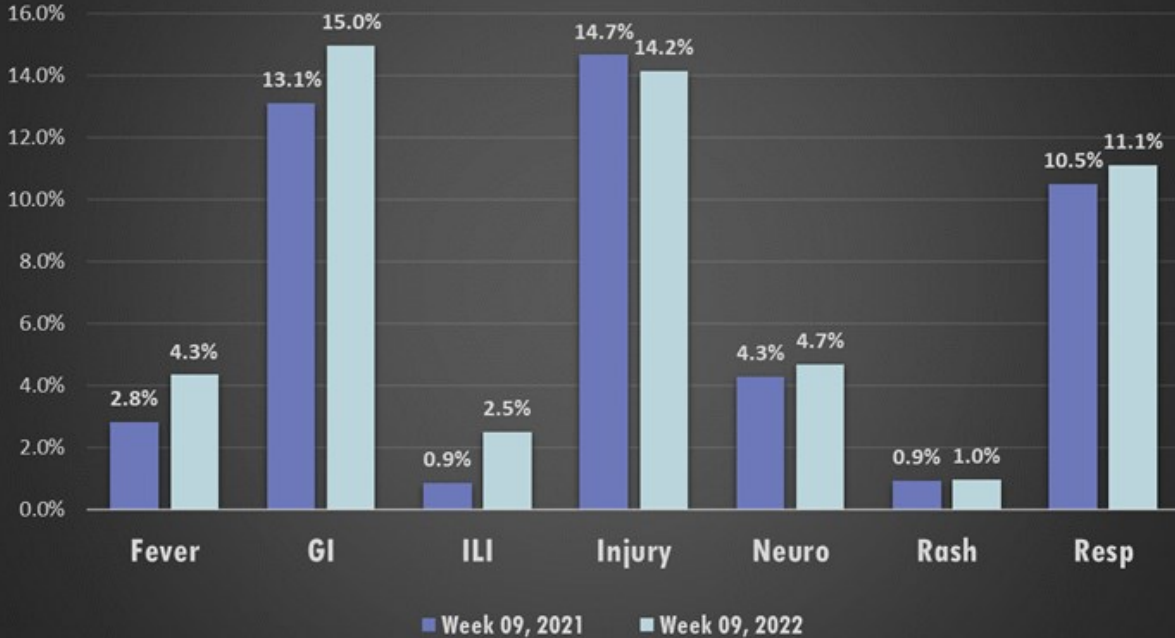
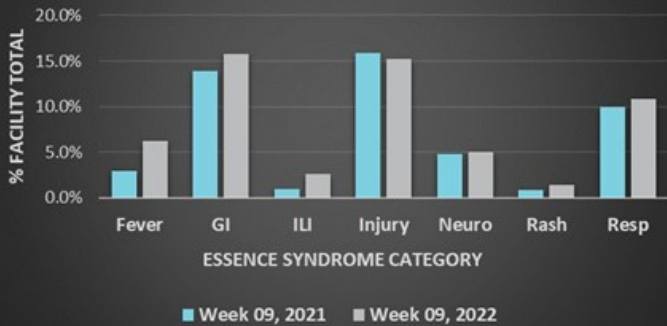


Figure 4: Hospital Emergency Department (ED) visits from 2022 Week 09 by select syndrome category. Percentages calculated based on total number of ED visits (n=2070). Some syndrome categories are not represented; therefore, represented percentages will not total 100%. Data source: ESSENCE

Fort Walton Beach Medical Center ED Presentations



Week 09—Fort Walton Beach Medical Center

Age Range	Top Syndrome	Total ED Visits for Syndrome
0-4	FEVER	25
5-19	GI	25
20-34	GI	36
35-54	INJURY	42
55-74	INJURY	27
75+	GI	21

North Okaloosa Medical Center ED Presentations



Week 09—North Okaloosa Medical Center

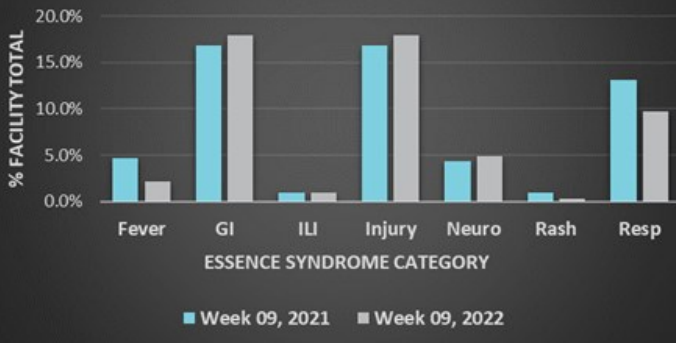
Age Range	Top Syndrome	Total ED Visits for Syndrome
0-4	FEVER	6
5-19	GI	12
20-34	GI	17
35-54	GI	16
55-74	INJUEY, RESP	15, 15
75+	RESP	12



Syndromic Surveillance

Week 09: February 27 – March 5

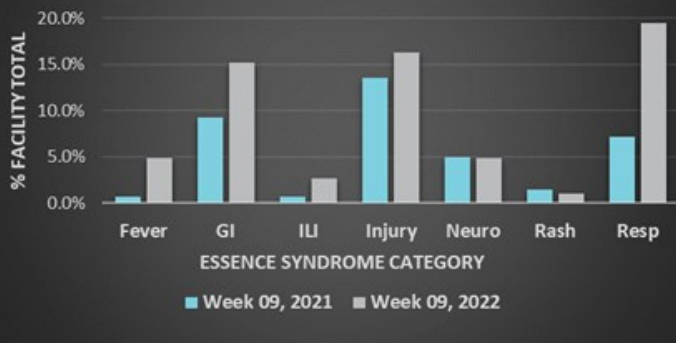
Twin Cities Hospital ED Presentations



Week 09—Twin Cities Hospital

Age Range	Top Syndrome	Total ED Visits for Syndrome
0-4	INJURY	5
5-19	GI	8
20-34	GI	19
35-54	GI	15
55-74	INJURY	15
75+	INJURY	15

DestinER ED Presentations



Week 09—Destin ER

Age Range	Top Syndrome	Total ED Visits for Syndrome
0-4	RESP	8
5-19	RESP	8
20-34	GI	12
35-54	INJURY, RESP	7, 7
55-74	INJURY	9
75+	INJURY	3

Week 09—Okaloosa County

Age Group	Top Syndrome
0-4	FEVER
5-19	GI
20-34	GI
35-54	GI
55-74	INJURY
75+	INJURY



Data Source: ESSENCE