

# Weekly Disease Surveillance Report



2024 Reporting Week 24: June 9 — June 15

This weekly report is produced by the DOH-Okaloosa Epidemiology Section to provide situational awareness to community partners. Data is subject to change as additional information is gathered.

## Recent CDC Health Advisories

06/13/24: [HAN 00510 — Disrupted Access to Prescription Stimulant Medications Could Increase Risk of Injury and Overdose](#)

06/12/24: [HAN 00509 — Severe Illness Potentially Associated with Consuming Diamond Shroomz™ Brand Chocolate Bars, Cones, and Gummies](#)

05/20/24: [HAN 00508 — Meningococcal Disease Cases Linked to Travel to the Kingdom of Saudi Arabia \(KSA\): Ensure Pilgrims are Current on Meningococcal Vaccination](#)

04/23/24: [HAN 00507 — Adverse Effects Linked to Counterfeit or Mishandled Botulinum Toxin Injections](#)

04/05/24: [HAN 00506 — Highly Pathogenic Avian Influenza A\(H5N1\) Virus: Identification of Human Infection and Recommendations for Investigations and Response](#)

## ILI Trends

Influenza-like illness (ILI) in Okaloosa increased slightly during Week 24 and is in line with the previous year's level (current level: 2.34%; last year: 2.27%). Please stay vigilant, promote vaccination, and visit the weekly [Florida FLU REVIEW](#).

## Contact Us:

**Florida Department of Health  
in Okaloosa County**

**Epidemiology Section**

**24/7 Disease Reporting:  
850-833-9065**

**Confidential Fax:  
850-833-7577**

**[okaloosaepi@flhealth.gov](mailto:okaloosaepi@flhealth.gov)**

## COVID-19 Corner

### Week 24 Data Update

Effective May 1, 2024, hospitals are no longer required to report COVID-19 hospital admissions, hospital capacity, or hospital occupancy data to HHS through CDC's National Healthcare Safety Network (NHSN). CDC encourages ongoing, voluntary reporting of hospitalization data. Data voluntarily reported to NHSN after May 1, 2024, will be available starting May 10, 2024, at [COVID Data Tracker Hospitalizations](#).

The source of hospital information on the COVID Data Tracker home page will change from the National Healthcare Safety Network (NHSN) to COVID-NET. Instead of displaying national counts of new hospital admissions, it will show COVID-19 hospitalization rates per 100,000 people. More information on COVID-Net is available on [COVID-NET Laboratory-confirmed COVID-19 Hospitalizations](#).

## In the Know: Cucumbers + *Salmonella*

A CDC investigation notice regarding an outbreak of *Salmonella* infections has been posted: <https://www.cdc.gov/salmonella/africana-06-24/index.html>

CDC has received reports of 196 people from 28 states and DC who are sick with this outbreak strain of *Salmonella*, including 68 hospitalizations (no deaths). Epidemiologic data show that cucumbers may be contaminated with *Salmonella*. Further testing is underway to verify linkage between cases and cucumbers.

Fresh Start Produce Sales Inc. [recalled](#) whole cucumbers grown in Florida. English cucumbers and mini cucumbers are not included in this recall. Recalled cucumbers should no longer be in stores.

Most people infected with *Salmonella* experience diarrhea, fever, and stomach cramps. Symptoms usually start 6 hours to 6 days after swallowing the bacteria. Most people recover without treatment after 4 to 7 days, but some people—especially children younger than 5 years, adults 65 years and older, and people with weakened immune systems—may experience more severe illnesses that require medical treatment or hospitalization.

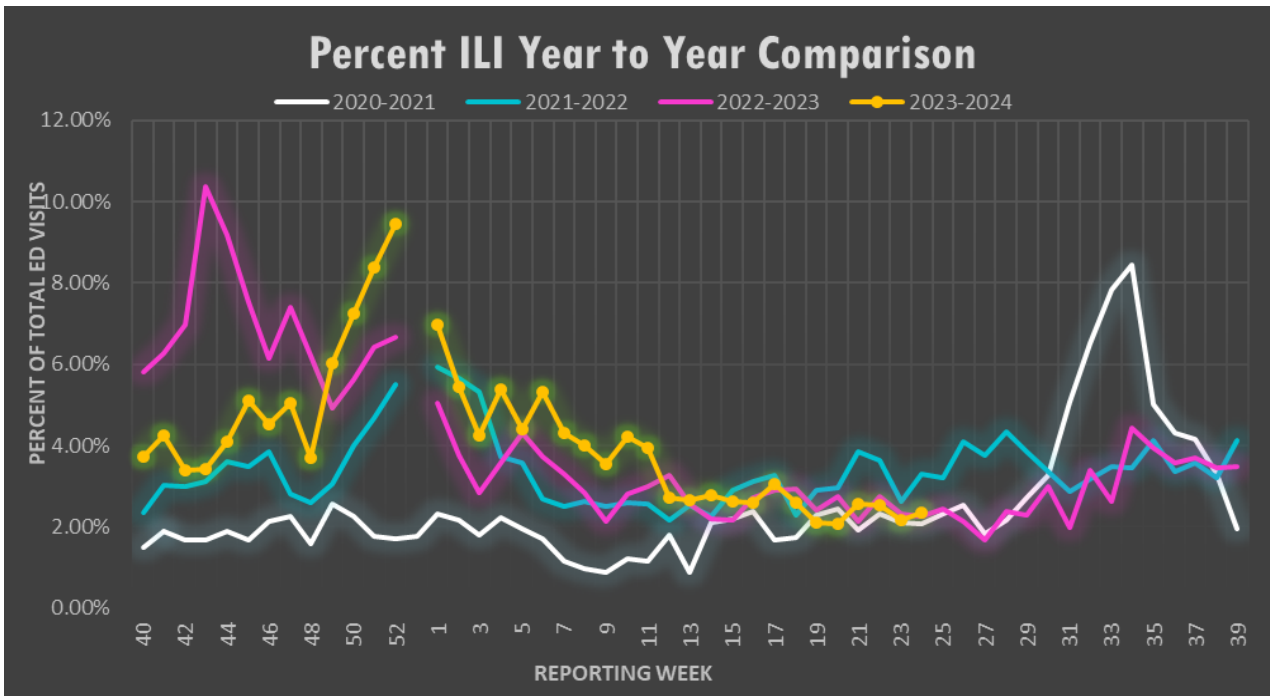
For more information about *Salmonella*, see [the \*Salmonella\* Questions and Answers page](#).



# Influenza-Like Illness

Week 24: June 9 – June 15

**Influenza-like Illness (ILI)** is defined as fever greater than or equal to 100°F AND cough and/or sore throat in the absence of another known cause.

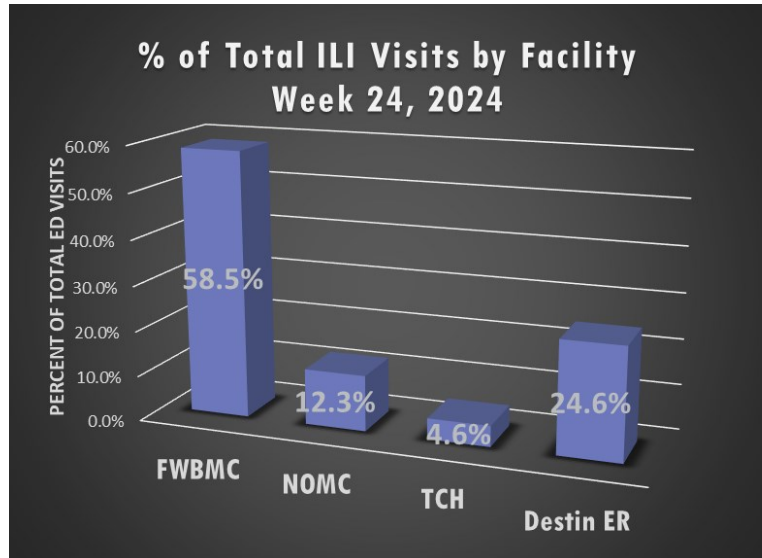


**Figure 2:** Annual comparison of the percent of all hospital ED visits due to ILI for Okaloosa county for the 2020-21, 2021-22, 2022-23 and 2023-2024 influenza seasons by week. Data source: ESSENCE

**ANALYSIS:** During Week 24, flu reporting partners and ESSENCE (a syndromic surveillance system) reported a plateau in ILI activity for Okaloosa County. The percentage of ILI ED visits in Okaloosa County slightly increased this week (2.16% during Week 23 to 2.34% during Week 24). Flu partners reported 8 positive rapid flu tests this week (8 Influenza B). Over the past three weeks, no influenza specimens submitted to the state lab were positive. There were no ILI admissions or deaths reported by flu partners this week. One outbreak has been reported in the past 3 weeks. The percentage of total ILI ED visits for Week 24 is higher than that of Week 24 last year.  
*Note:* Other respiratory syndromes can be represented by increased ILI case numbers.  
 Data Source: ESSENCE

% ILI by Age Group Week 24, 2024			
Age Range	ILI Visits	Total ED Visits	% Total ILI Visits
0-4	16	188	8.51%
5-19	17	349	4.87%
20-34	10	604	1.66%
35-54	11	682	1.61%
55-74	5	605	0.83%
75+	6	347	1.73%

Data Source: ESSENCE



**Figure 3:** Hospital ED visits meeting ILI criteria stratified by facility. Percentages calculated based on total number of ILI ED visits. (n=65). Data source: ESSENCE



# Syndromic Surveillance

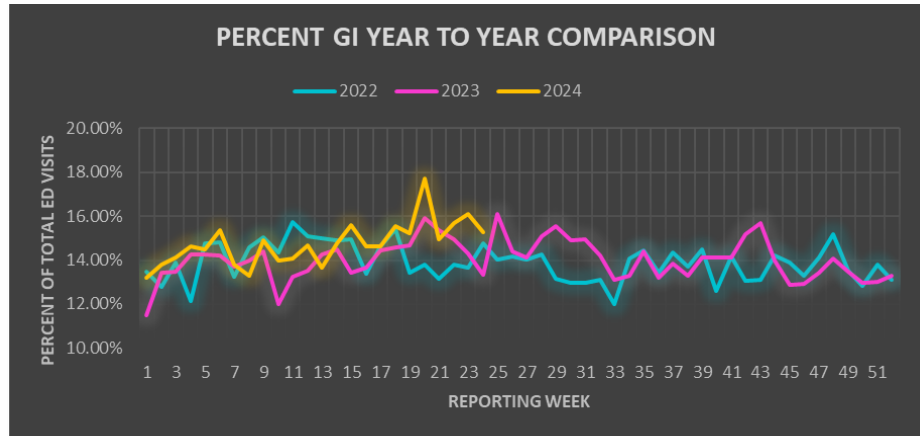
Week 24: June 9 – June 15

## Gastro-intestinal Illness (GI)

**Figure 4:**

Annual comparison for the percent of GI for all Okaloosa County hospital ED visits week to week for 2022, 2023, and 2024.

Data Source: ESSENCE

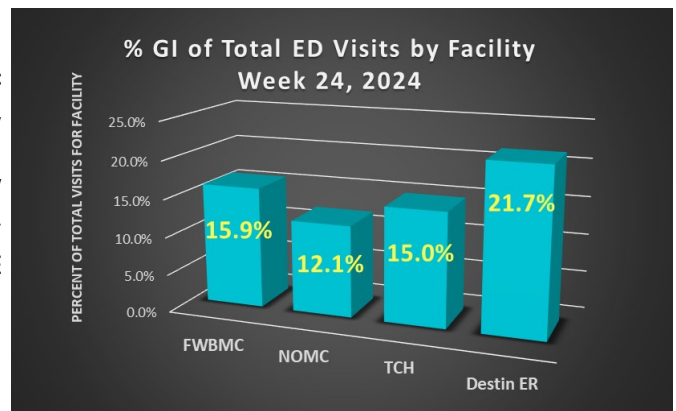


% GI by Age Group Week 24, 2024			
Age Range	GI Visits	Total ED Visits	% Total GI Visits
0-4	40	188	21.28%
5-19	50	349	14.33%
20-34	103	604	17.05%
35-54	113	682	16.57%
55-74	88	605	14.55%
75+	31	347	8.93%

**Figure 5:**

Hospital emergency room visits due to GI illness stratified by facility.

Data source: ESSENCE

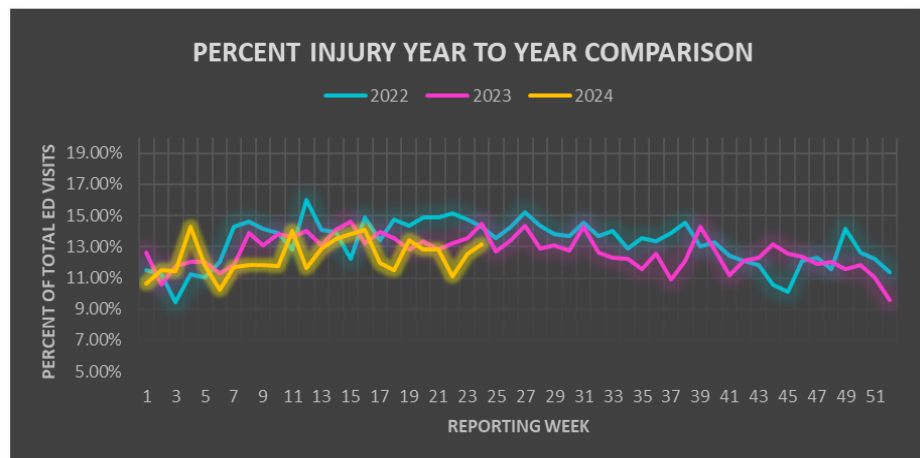


## Injury

**Figure 6:**

Annual comparison for the percent of Injury for all Okaloosa County hospital ED visits week to week for 2021, 2022, and 2023.

Data Source: ESSENCE

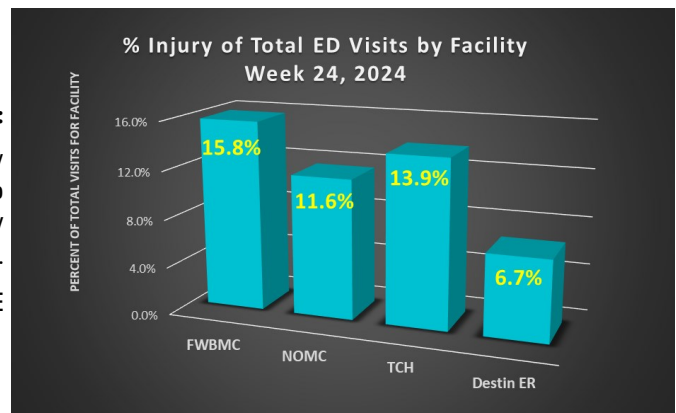


% Injury by Age Group Week 24, 2024			
Age Range	Injury Visits	Total ED Visits	% Total Injury Visits
0-4	21	188	11.17%
5-19	69	349	19.77%
20-34	71	604	11.75%
35-54	73	682	10.70%
55-74	58	605	9.59%
75+	72	347	20.75%

**Figure 7:**

Hospital emergency room visits due to Injury stratified by facility.

Data source: ESSENCE

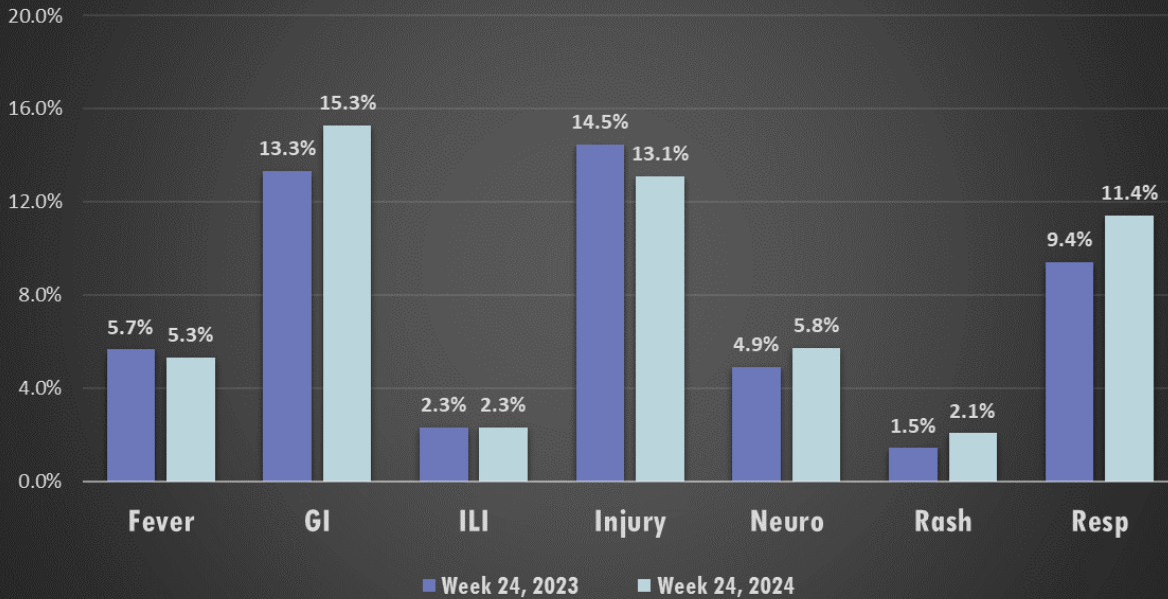




# Syndromic Surveillance

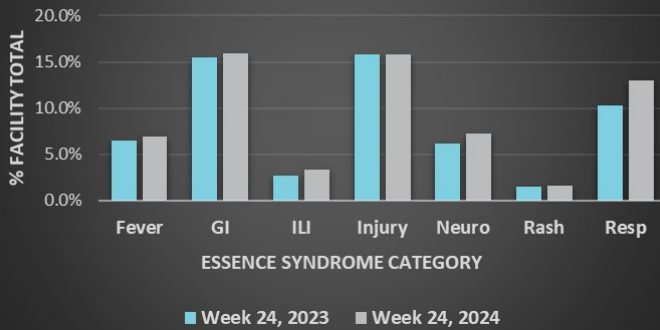
Week 24: June 9 – June 15

## Total ED Visits by Syndrome



**Figure 8:** Hospital Emergency Department (ED) visits from 2024 Week 24 by select syndrome category. Percentages calculated based on total number of ED visits (n=2781). Some syndrome categories are not represented; therefore, represented percentages will not total 100%. Data source: ESSENCE

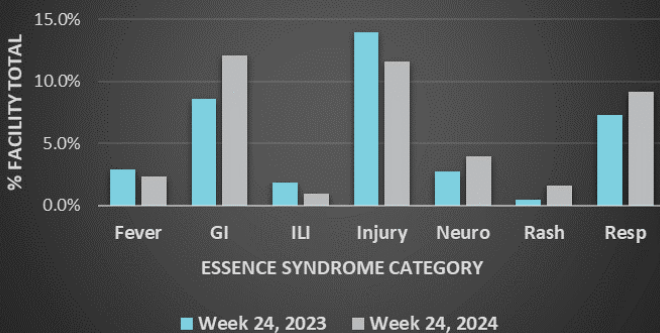
## Fort Walton Beach Medical Center ED Presentations



## Week 24 - Fort Walton Beach Medical Center

Age Range	Top Syndrome	Total ED Visits for Syndrome
0-4	FEVER	31
5-19	INJURY	36
20-34	GI	50
35-54	INJURY	40
55-74	GI	33
75+	RESP	33

## North Okaloosa Medical Center ED Presentations



## Week 24 - North Okaloosa Medical Center

Age Range	Top Syndrome	Total ED Visits for Syndrome
0-4	FEVER	9
5-19	INJURY	13
20-34	GI	28
35-54	GI	32
55-74	GI, RESP	26, 26
75+	INJURY	25

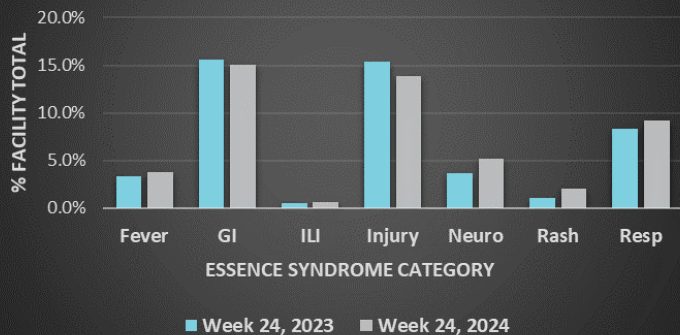




# Syndromic Surveillance

Week 24: June 9 – June 15

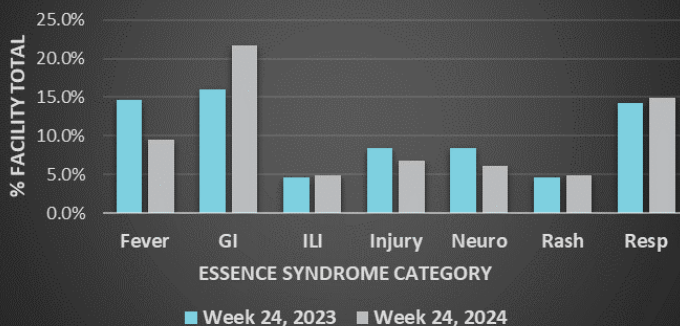
## Twin Cities Hospital ED Presentations



## Week 24 - Twin Cities Hospital

Age Range	Top Syndrome	Total ED Visits for Syndrome
0-4	FEVER, INJURY	4, 4
5-19	INJURY	14
20-34	GI	13
35-54	GI	23
55-74	GI, INJURY	14, 14
75+	INJURY	14

## Destin ER ED Presentations



## Week 24 - Destin ER

Age Range	Top Syndrome	Total ED Visits for Syndrome
0-4	FEVER	10
5-19	GI	11
20-34	GI	12
35-54	GI	19
55-74	GI	15
75+	GI	6

## Week 24 - Okaloosa County

Age Group	Top Syndrome
0-4	FEVER
5-19	INJURY
20-34	GI
35-54	GI
55-74	GI
75+	INJURY



Data Source: ESSENCE