

Weekly Disease Surveillance Report

2021 Reporting Week 44: October 31 — November 6



This weekly report is produced by the DOH-Okaloosa Epidemiology Section to provide situational awareness to community partners. Data is subject to change as additional information is gathered.

Influenza (Flu) and COVID-19 Trends Slightly Increasing

Influenza-like illness (ILI) activity in Okaloosa rose again to 3.6% this past week. With this increasing ILI trend at double our normal numbers, providers are encouraged to review CDC's [Seasonal Influenza Vaccination Resources for Health Professionals](#) to be prepared for counseling on co-administration of COVID-19 and flu vaccines, patient education, and the 2021-22 flu vaccine composition.

Okaloosa COVID-19 trends also showed increasing activity during Week 44. The positivity rate and number of COVID-19 cases increased for the week, but the community risk level remains at SUBSTANTIAL. The number of COVID-19 vaccinations continue to show positive trends with fully-vaccinated Okaloosans currently at 62.4% (111,499 individuals). Please continue to encourage vaccination as the COVID-19 vaccine is highly effective at preventing severe disease and death.

COVID-19 Booster Shots and Monoclonal Antibody Resources

On October 21, 2021, the [CDC Expanded Eligibility for COVID-19 Booster Shots](#). The CDC recommends that certain people are now eligible to receive a COVID-19 **booster** shot, including those who received Moderna and J&J/Janssen COVID-19 vaccines. View the CDC guidance [here](#) or see page 7 of this WDSR for the COVID-19 Vaccine Booster Update from the Florida Department of Health, which expands on this CDC guidance.

Additionally, CDC continues to recommend that [moderately and severely immunosuppressed people](#) who completed either the Moderna or Pfizer vaccine series get a **third dose** of the same mRNA vaccine at least 28 days after the second dose as they may not build the same level of immunity to 2-dose vaccine series compared to people who are not immunocompromised.

FREE [Monoclonal Antibody Treatments](#) are available in Okaloosa for use in adult and pediatric patients (12 and older) who have either been diagnosed or exposed to someone with COVID-19 and are at high risk

Contact Us:

**Florida Department of Health
in Okaloosa County**

Epidemiology Section

**24/7 Disease Reporting:
850-833-9065**

Confidential Fax:

850-833-7577

okaloosaepi@flhealth.gov

COVID-19 Snapshot

Week 44 Review		Difference from Wk43
Resident Case Count	136	+23
Resident Case Count per 100K Population	65.9	+11.2
Average Resident Cases per Day	19.4	+3.3
Percent Positivity	6.0%	+1.0%

Data Source: Merlin Database

The Florida Department of Health (FDOH) provides the Centers for Disease Control and Prevention (CDC) with county COVID-19 data, including deaths.

Please visit the [COVID-19 Community Profile Report](#) webpage to obtain death data by downloading the most recent excel file and locating Okaloosa on the 'Counties' tab.

For questions related to COVID-19 death data, please contact the FDOH Office of Communications at 850-245-4111 or NewsMedia@flhealth.gov.

Week 44 Community Risk Level		
COVID-19 Community Risk Level	New Cases per 100K Population per Week	% Positivity per Week
SUBSTANTIAL	65.9	6.0%
PREVIOUS WEEK RISK LEVEL: SUBSTANTIAL		
Low	<10	<5%
Moderate	10-49	5-7.9%
Substantial	50-99	8-9.9%
High	>100	>10%

Community risk level is the color of the higher risk level for the two indicators.

Data Source: CDC [Community Indicators at the County Level](#)



COVID-19 Fully
Vaccinated =
No Quarantine

COVID-19 in Okaloosa County

Week 44: October 31 - November 6

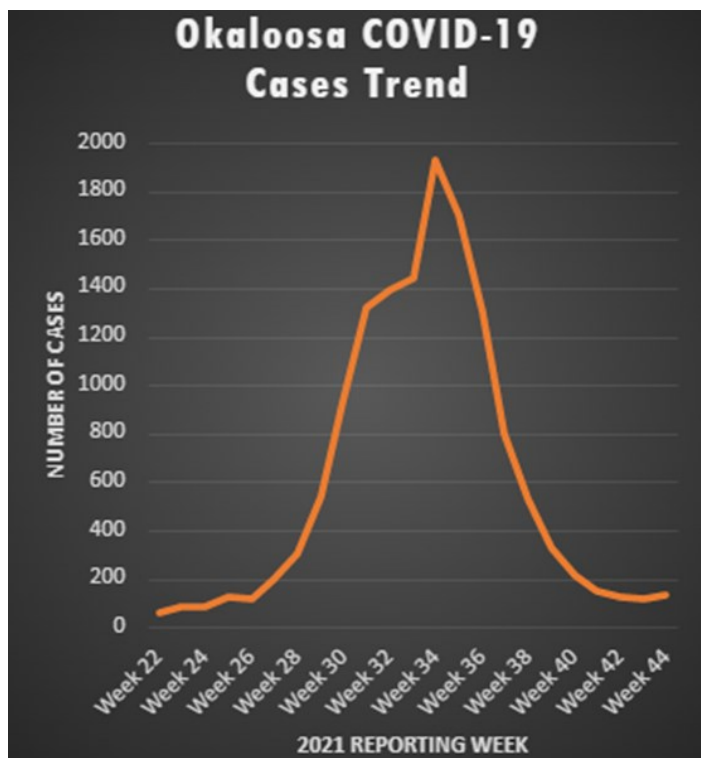


Figure 1: Trend of total COVID-19 cases by week. Data source: Merlin Database

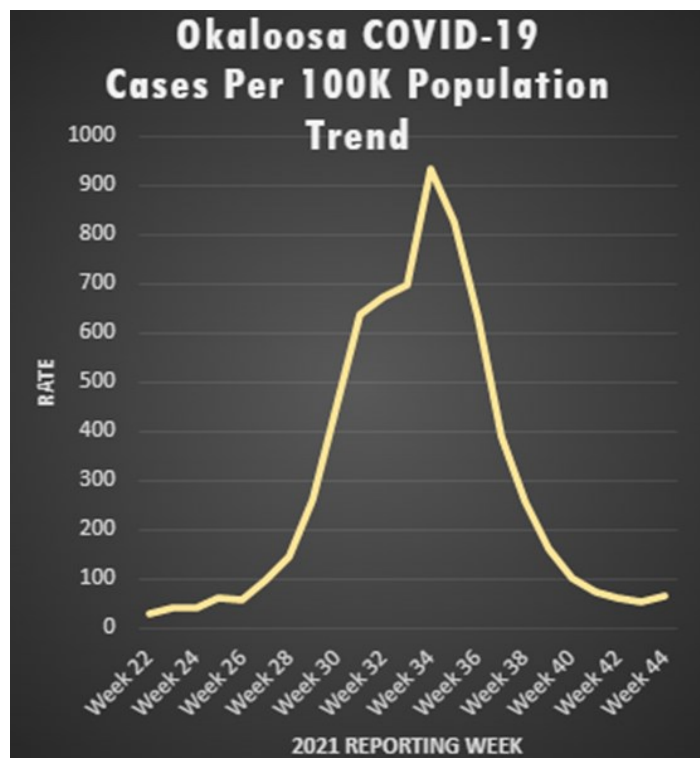


Figure 2: Trend of COVID-19 case rates by week. Data source: Merlin Database

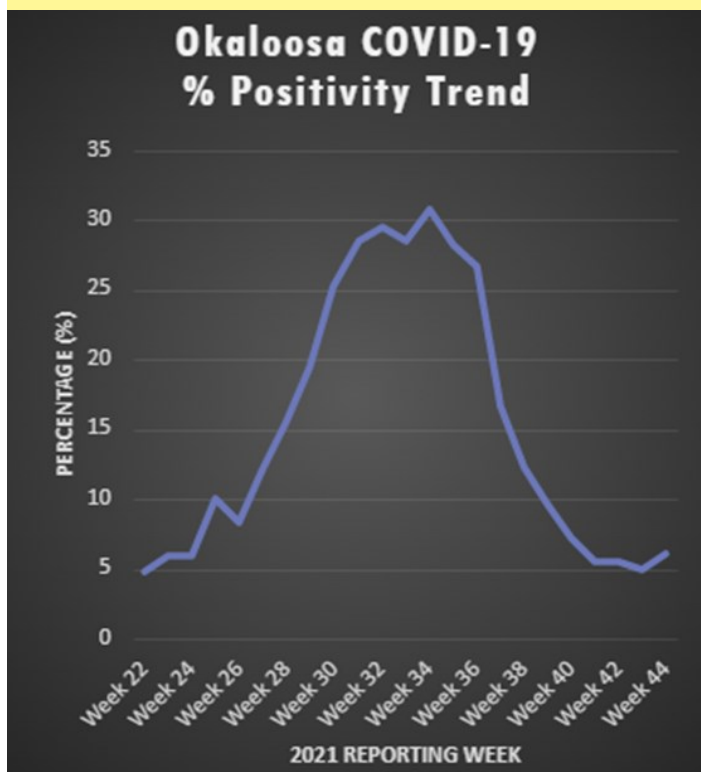


Figure 3: Trend of 7-day moving percent positivity of COVID-19 cases by week. Data source: Merlin Database

COVID-19 Cases by Age Group

Age Group	Okaloosa Resident Cases since 03/01/21 through Week 44	% by Age Group	Difference from Week 43
0-11	2038	12.9%	+9
12-14	707	4.5%	+2
15-24	2433	15.4%	+27
25-44	5400	34.2%	+42
45-64	3637	23.0%	+42
65-74	966	6.1%	+4
75-84	405	2.6%	+6
85+	211	1.3%	+4
Unknown	6	0.0%	0
Total	15803	100%	+136

Data Source: Merlin Database



COVID-19 Fully
Vaccinated =
No Quarantine

COVID-19 in Okaloosa County

Week 44: October 31 - November 6

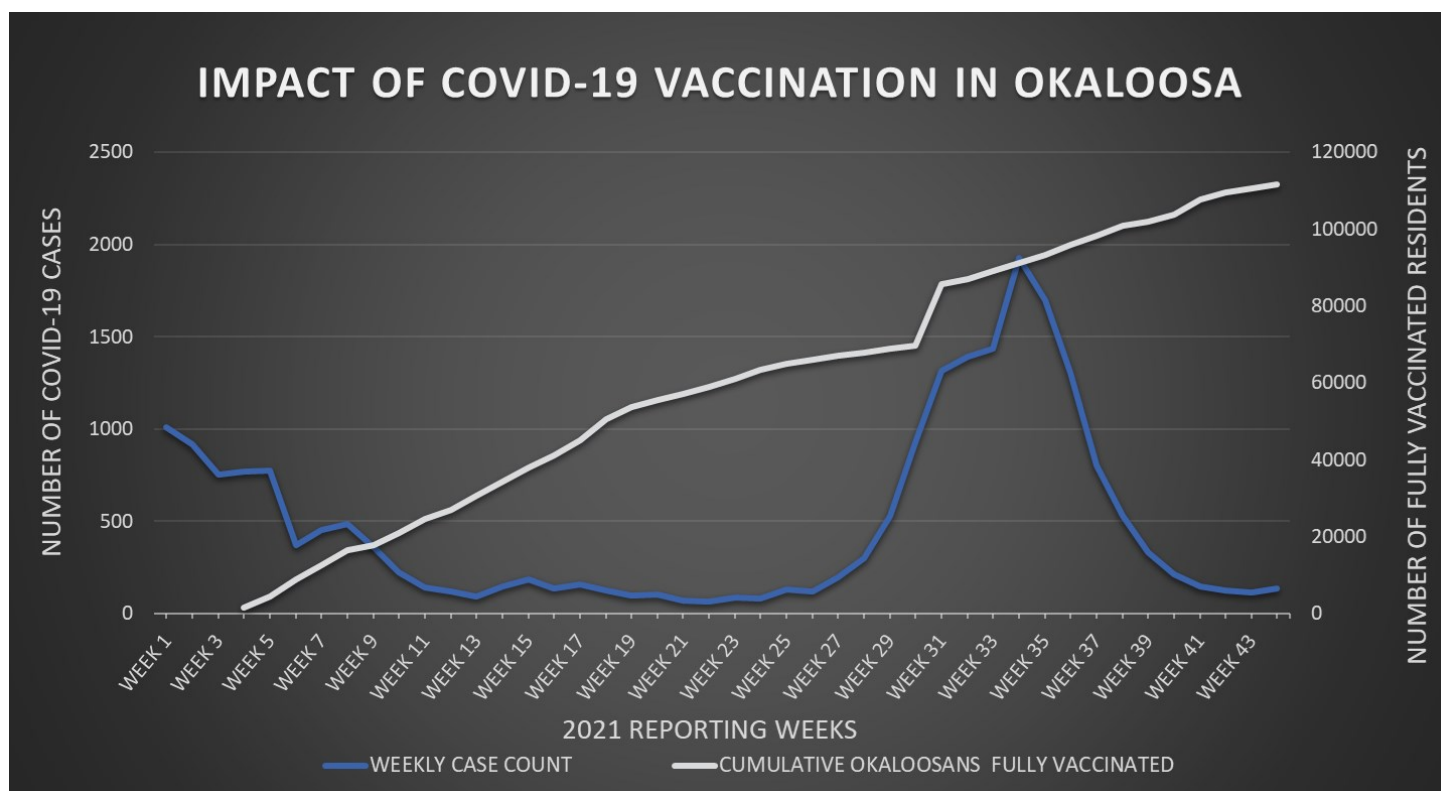


Figure 4: Cumulative number of fully vaccinated Okaloosa residents as compared to COVID-19 cases per week. Data reported through previous Sunday.
Data Source: Merlin & CDC [COVID Data Tracker](#)

VACCINATION DATA RESOURCE

The CDC COVID Data Tracker presents county level vaccination data that includes vaccinations from:

- FL SHOTS, including FL Department of Health, retail pharmacies, and long-term care facilities,
- Dialysis centers participating in the Federal Dialysis Center Program,
- Health Resources and Services Administration partner sites, and
- Federal entities such as Department of Defense, Veterans Health Administration, Indian Health Service and Bureau of Prisons.

Percentage of
Breakthrough
Infection in
Fully-Vaccinated
Individuals:

1.31%

Data Source: Merlin & CDC [COVID Data Tracker](#)

COVID-19 VACCINATIONS

Fully-Vaccinated Groups	OKALOOSA	US
% of Population \geq 12 Years of Age	62.4%	68.3%
% of Population \geq 18 Years of Age	65.0%	70.1%
% of Population \geq 65 Years of Age	89.3%	85.6%

Data reported through previous Sunday. Data Source: CDC [COVID Data Tracker](#)



Influenza-Like Illness

Week 44: October 31 - November 6

Influenza-like Illness (ILI) is defined as fever greater than or equal to 100°F AND cough and/or sore throat in the absence of another known cause.

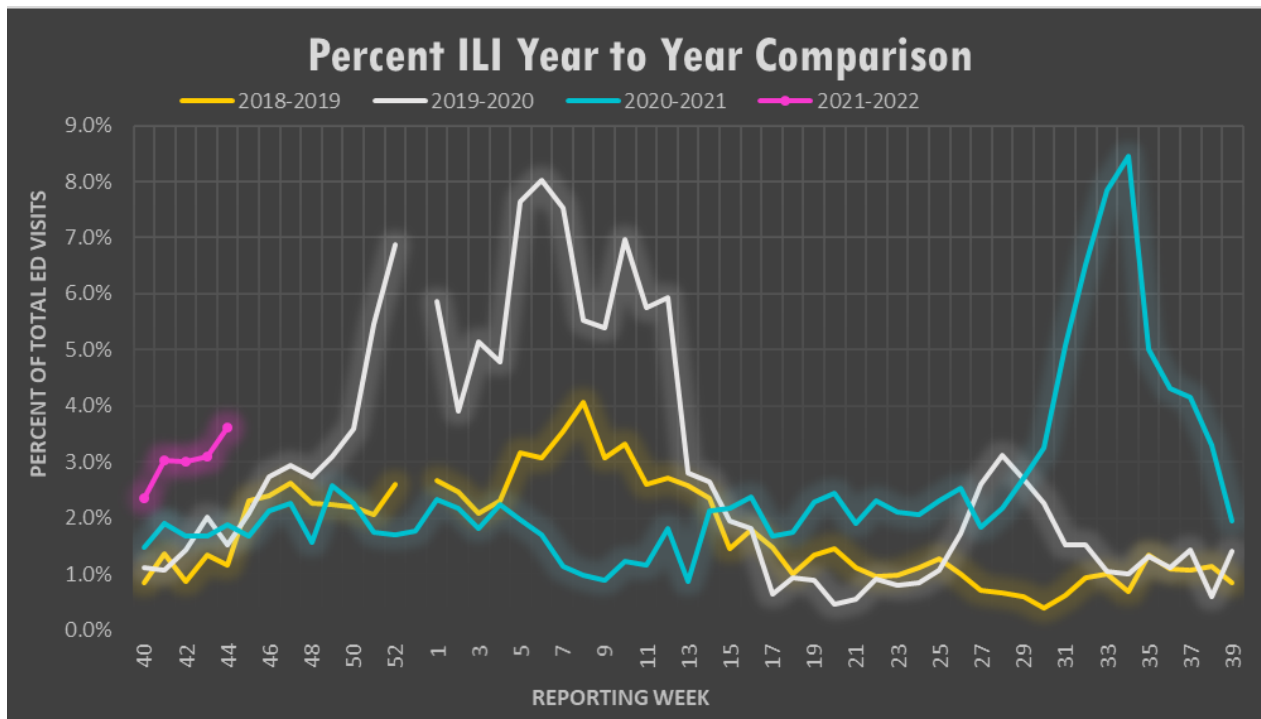


Figure 5: Annual comparison of the percent of all hospital ED visits due to ILI for Okaloosa county for the 2017-18, 2018-19, 2019-20, and 2020-21 influenza seasons by week. Data source: ESSENCE

ANALYSIS: During Week 44, flu reporting partners and ESSENCE (a syndromic surveillance system) reported an increase in ILI activity for Okaloosa County. The percentage of ILI ED visits in Okaloosa County increased slightly from 3.01% during Week 43 to 3.61% during Week 44. Flu partners reported no positive rapid influenza tests this week. Over the past three weeks, 10 out of 140 influenza specimens submitted to the state lab were positive (3 Influenza A unspecified, 7 Influenza B unspecified). There were no ILI admissions, outbreaks, or deaths reported this week. The percentage of total ILI ED visits for Week 44 is higher than that of Week 44 last year.

Note: Other respiratory syndromes can be represented by increased ILI case numbers. Data Source: ESSENCE

% ILI by Age Group Week 44, 2021

Age Range	ILI Visits	Total ED Visits	% Total ILI Visits
0-4	34	182	18.68%
5-19	20	271	7.38%
20-34	6	418	1.44%
35-54	4	403	0.99%
55-74	3	392	0.77%
75+	1	219	0.46%

Data Source: ESSENCE

% of Total ILI Visits by Facility Week 44, 2021

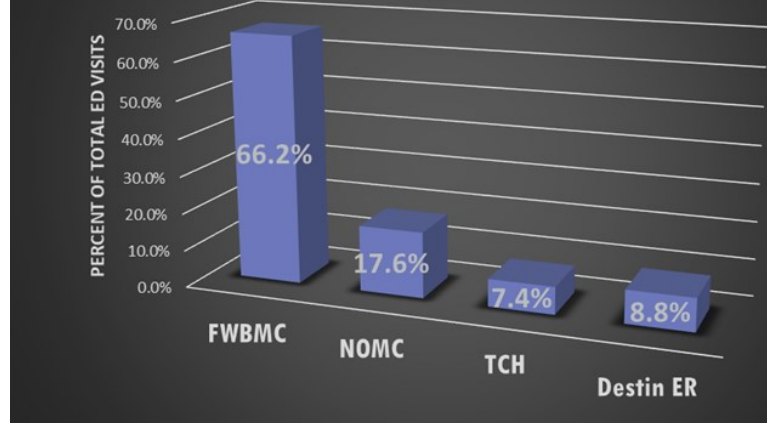


Figure 6: Hospital ED visits meeting ILI criteria stratified by facility. Percentages calculated based on total number of ILI ED visits. (n=68). Data source: ESSENCE



Syndromic Surveillance

Week 44: October 31 - November 6

Total ED Visits by Syndrome

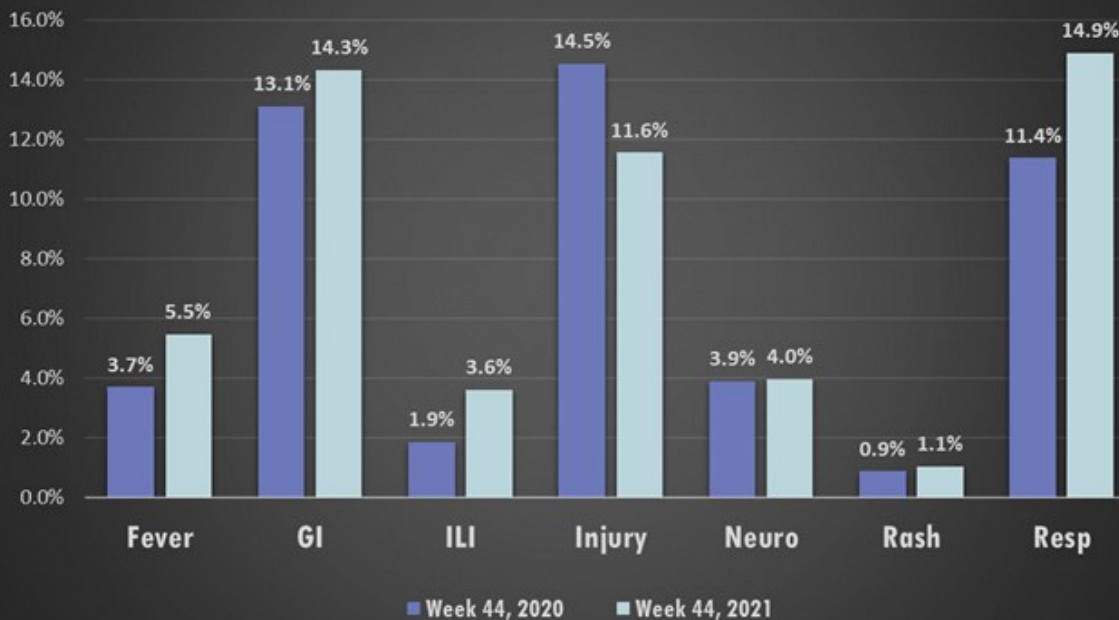


Figure 7: Hospital Emergency Department (ED) visits from 2021 Week 44 by select syndrome category. Percentages calculated based on total number of ED visits (n=1886). Some syndrome categories are not represented; therefore, represented percentages will not total 100%.

Data source: ESSENCE

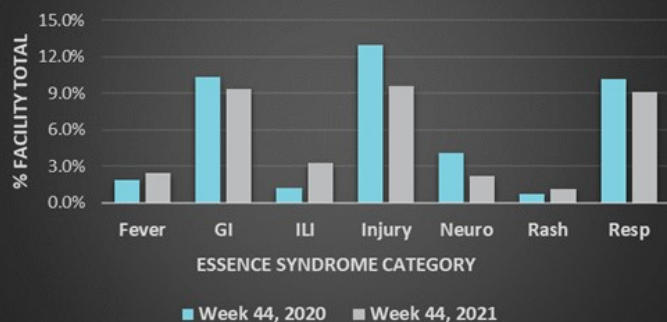
Fort Walton Beach Medical Center ED Presentations



Week 44—Fort Walton Beach Medical Center

Age Range	Top Syndrome	Total ED Visits for Syndrome
0-4	RESP	52
5-19	RESP	48
20-34	GI	45
35-54	GI	34
55-74	GI	27
75+	GI	17

North Okaloosa Medical Center ED Presentations



Week 44—North Okaloosa Medical Center

Age Range	Top Syndrome	Total ED Visits for Syndrome
0-4	FEVER	5
5-19	INJURY	7
20-34	GI	9
35-54	GI	8
55-74	GI, INJURY, RESP	8, 8, 8
75+	GI	6



Syndromic Surveillance

Week 44: October 31 - November 6

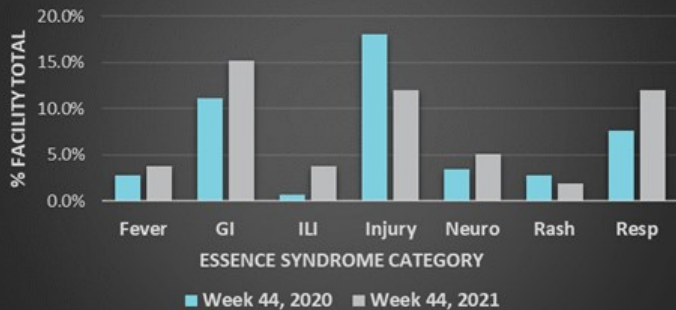
Twin Cities Hospital ED Presentations



Week 44—Twin Cities Hospital

Age Range	Top Syndrome	Total ED Visits for Syndrome
0-4	RESP	7
5-19	GI, RESP	8, 8
20-34	GI, RESP	10, 10
35-54	GI	9
55-74	INJURY	15
75+	INJURY	15

DestinER ED Presentations



Week 44—DestinER

Age Range	Top Syndrome	Total ED Visits for Syndrome
0-4	FEVER	4
5-19	GI	5
20-34	GI, NEURO	4, 4
35-54	RESP	7
55-74	GI, INJURY	7, 7
75+	INJURY	5

Week 44—Okaloosa County

Age Group	Top Syndrome
0-4	RESP
5-19	GI
20-34	GI
35-54	INJURY
55-74	INJURY
75+	INJURY



Data Source: ESSENCE

Mission:

To protect, promote & improve the health of all people in Florida through integrated state, county & community efforts.



Ron DeSantis
Governor

Joseph A. Ladapo, MD, PhD
State Surgeon General

Vision: To be the **Healthiest State** in the Nation

October 25, 2021

COVID-19 Vaccine Booster Update

On October 21, 2021, the Advisory Committee on Immunizations Practices (ACIP) recommended the use of COVID-19 vaccination boosters for both the Moderna COVID-19 vaccine and Janssen COVID-19 vaccine (Johnson and Johnson) under the current emergency use authorization. Pfizer-BioNTech COVID-19 vaccine boosters were previously recommended by ACIP on September 24, 2021.

- Pfizer-BioNTech and Moderna COVID-19 booster vaccines are currently recommended for individuals 18 years of age and older who have completed their initial COVID-19 vaccination series, at least 6 months have passed since the completion of their second dose and they meet one of the following criteria:
 - 65 years or older
 - Reside in a long-term care facility
 - 18-64 years of age with underlying medical condition(s)
 - 18-64 years of age with increased risk for COVID-19 exposure and transmission because of occupational or institutional setting
- Janssen (Johnson and Johnson) COVID-19 booster vaccines are currently recommended for individuals who have received their initial COVID-19 vaccination and at least two months have passed since their initial dose.

There are now booster recommendations for all three available COVID-19 vaccines in the United States. Eligible individuals may choose which vaccine they receive as a booster dose, when available. Some individuals may have a preference for the vaccine type that they originally received, while others may prefer to get a different booster. The Center for Disease Control and Prevention's recommendations now allow for this type of mix and match dosing for booster shots of COVID-19 vaccine.

For additional information regarding COVID-19 vaccine boosters, visit <https://www.cdc.gov/media/releases/2021/p1021-covid-booster.html>.